

# Model Name: GA-H110M-DS2V DDR3 WP

rev 1.0

SHEET

TITLE

01	COVER SHEET
02	BOM & PCB MODIFY HISTORY
03	BLOCK DIAGRAM
04	CPU_LGA1151-A
05	CPU_LGA1151-B-DDR4
06	CPU_LGA1151-C
07	CPU_LGA1150-D
08	DDR3 CHANNEL A
09	DDR3 CHANNEL B
10	PCH_CLK BUFFER
11	PCH_DMI,USB,PCIE
12	PCH_MISC
13	PCH SATA,PCIE,SATA_EXPRESS
14	PCH_PWR,GND
15	Dual BIOS
16	ITE 8628 LPC IO
17	HWM
18	FAN CTRL--SIO
19	PCI EXPRESS*16 SLOT
20	PCI EXPRESS*1 SLOT
21	SATA EXPRESS
22	ISL95858_856 PWM
23	ISL95858_856 MOS_VCORE
24	ISL95858_856 MOS_VCCGT
25	VCCSA_VCCIO_VCCPLL
26	RT8120_DDR_VDDQ
27	RT8120_PCH_VCC1_0_PCH

SHEET

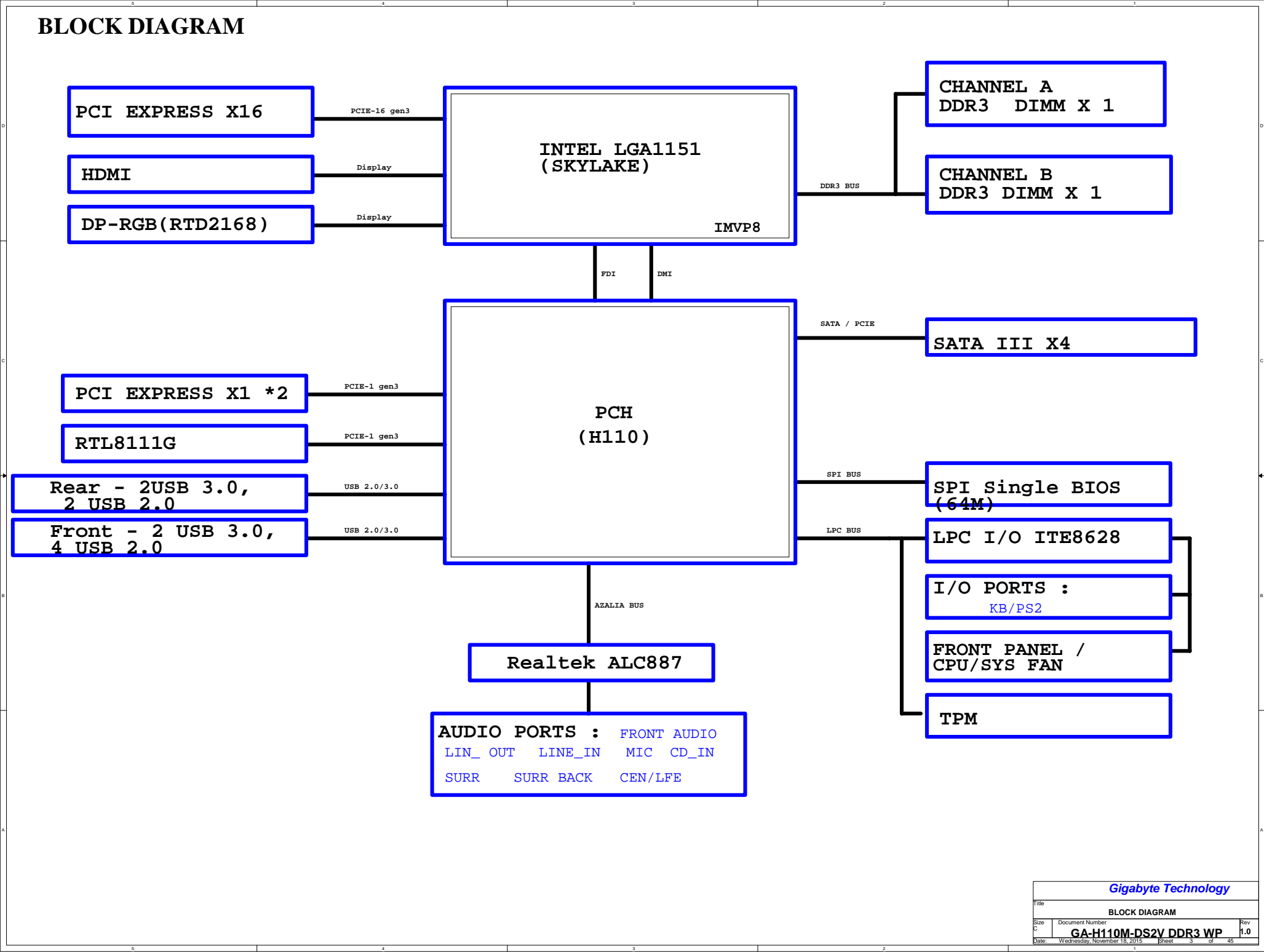
TITLE

28	DISCRETE POWER
29	ATX POWER , A_-PROCHOT
30	KB_MS_USB
31	RTD2168 - DP to VGA - IC
32	RTD2168 - DP to VGA - Conn
33	REALTEK - RTL8111G
34	USB30_LAN CONNECTOR-RTL8111G
35	Realtek ALC887
36	REAR AUDIO JACK
37	F_USB30
38	F_USB20
39	COM , LPT , TPM
40	F_PANEL
41	DVI
42	EMI/ESD
43	POWER MAP
44	TABLE LIST
45	NTC MAP
46	
47	
48	
49	
50	
51	

Gigabyte Technology

Title			
Cover Sheet			
Size	Document Number		Rev
Custom	GA-H110M-DS2V DDR3 WP		1.0
Date:	Wednesday, November 18, 2015	Sheet	1 of 45

BLOCK DIAGRAM



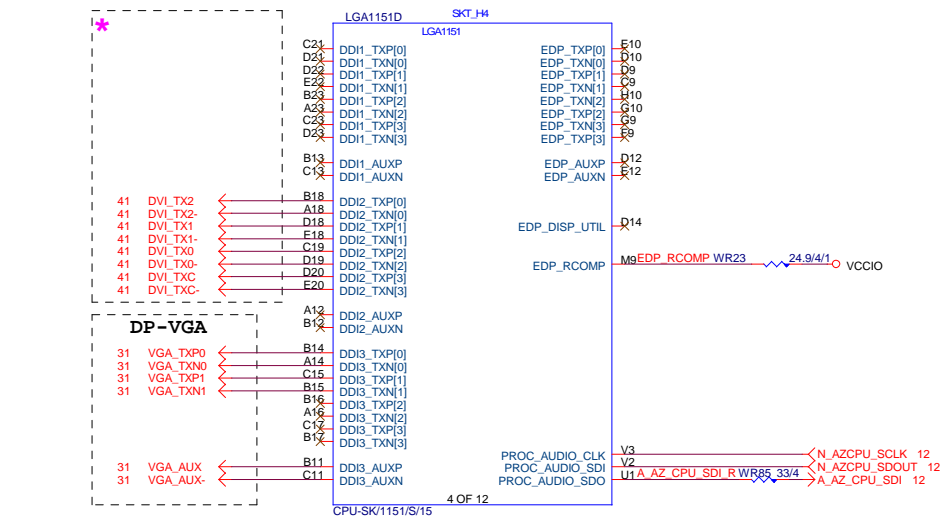
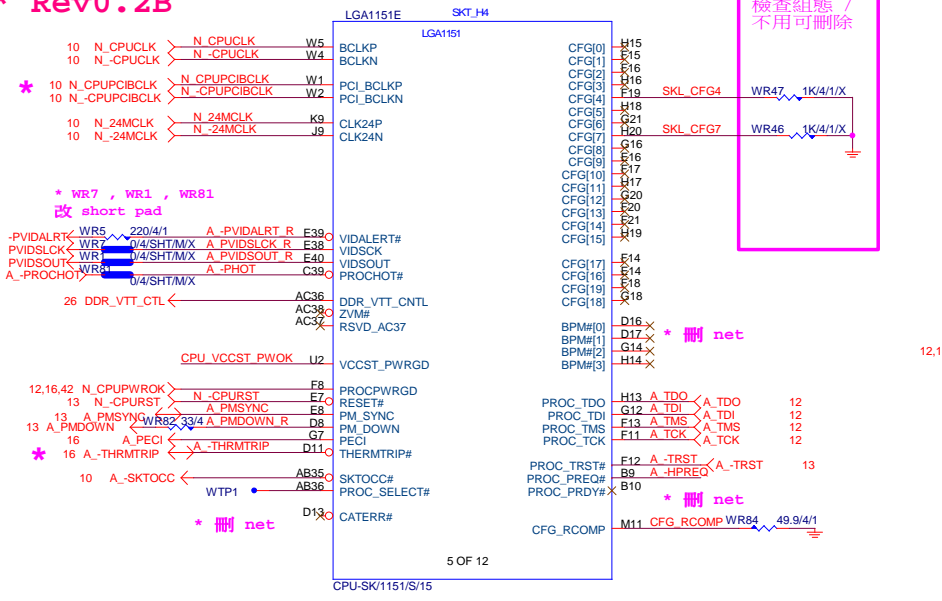
# \* Rev0.2B

D

C

B

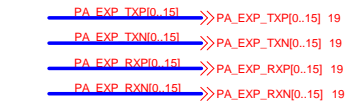
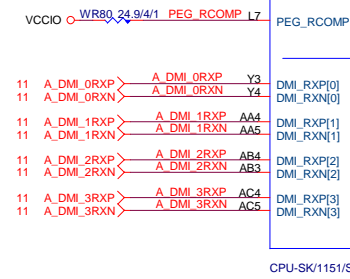
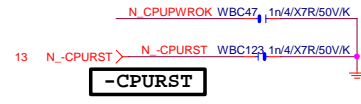
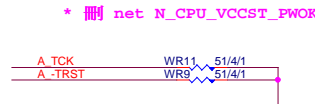
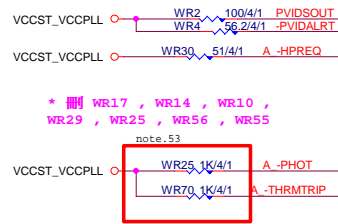
A



G-15u : (CPU-SK/1151/S/15)  
10SC1-F01151-11R / 10SC1-F01151-12R  
G-FL : (CPU-SK/1151/S/GF)  
10SC1-F01151-21R / 10SC1-F01151-22R

4 layer HDMI/DP/eDP/=====4/4/4//15  
6 layer HDMI/DP/eDP/=====4/5.5/4//15  
Impedance=85 +- 15%

检查组態 / 不用可刪除



4 layer PEG/DMI=====4/4/4//15  
6 layer PEG/DMI=====4/5.5/4//15

Impedance=85 +- 15%

W=12 mil out of CPU  
S=15 mil out of CPU

CFG[2]:x16 Lane Numbering  
Reversal. 1=  
NORMAL;0=reversal  
CFG[4]: eDP  
enable:1:disable/0=enable  
CFG[6:5]:PCI Express\* Bifurcation; 1l=  
1 x16 PCI Express;10=2x8 PCI Express  
CFG[7]: PEG Training;1=(default) PEG Train  
immediately following RESET#;0=PEG Wait  
for BIOS

Bifurcation Config.	Signals	Lanes
CFG[6]	CFG[5]	CFG[2]
1x16	1	1
1x16 Reversed	1	1
2x8	1	0
2x8 Reversed	1	0
1x8+2x4	0	1
1x8+2x4 Reversed	0	0

Gigabyte Technology		
CPU LGA1151-A		
Size	Document Number	Rev
Custom	GA-H110M-DS2V DDR3 WP	1.0
Date:	Wednesday, November 18, 2015	Sheet 4 of 45

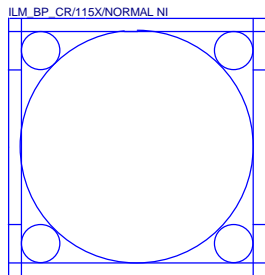
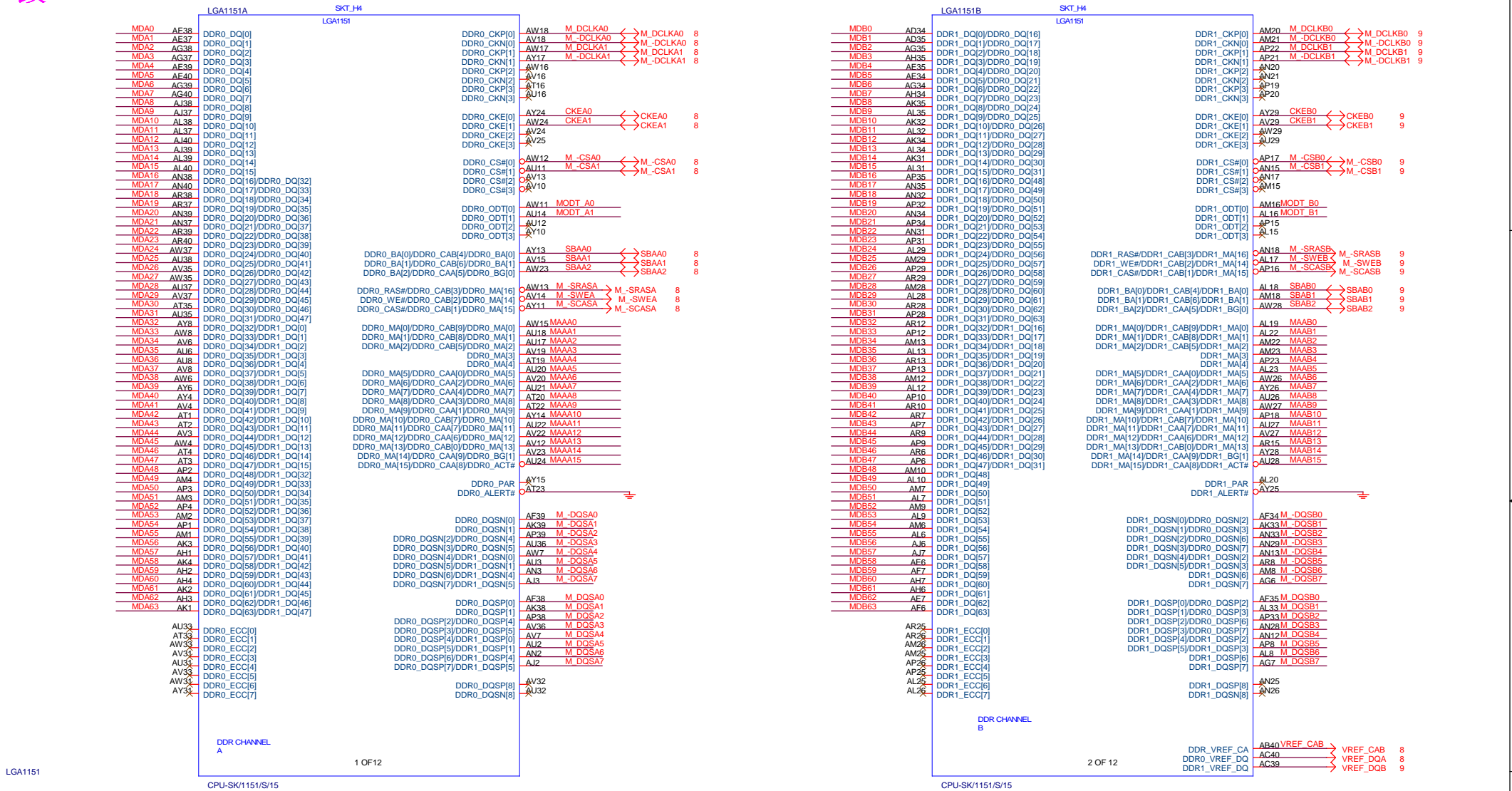
D

C

B

A

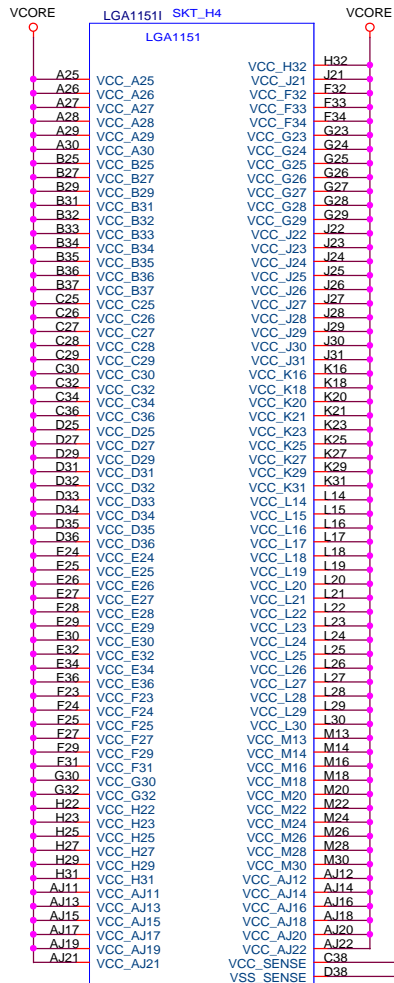
# \* 改DDR4 net



Need check the new CPU ME

Gigabyte Technology		
Title		
CPU LGA1151-B		
Size	Document Number	Rev
Custom	GA-H110M-DS2V DDR3 WP	1.0
Date:	Wednesday, November 18, 2015	Sheet 5 of 45

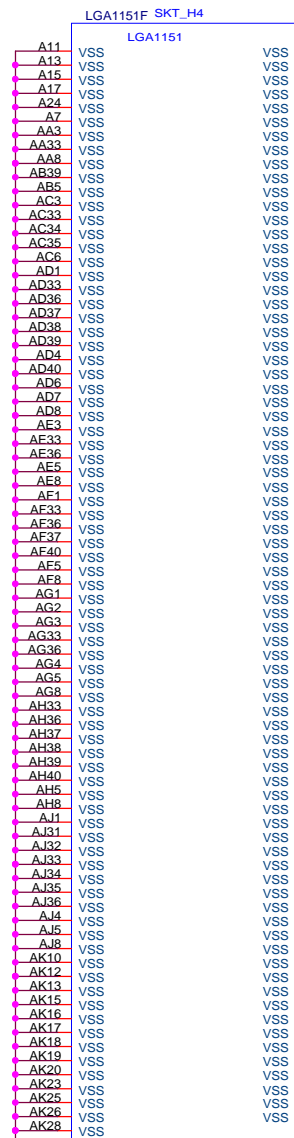




9 OF 12

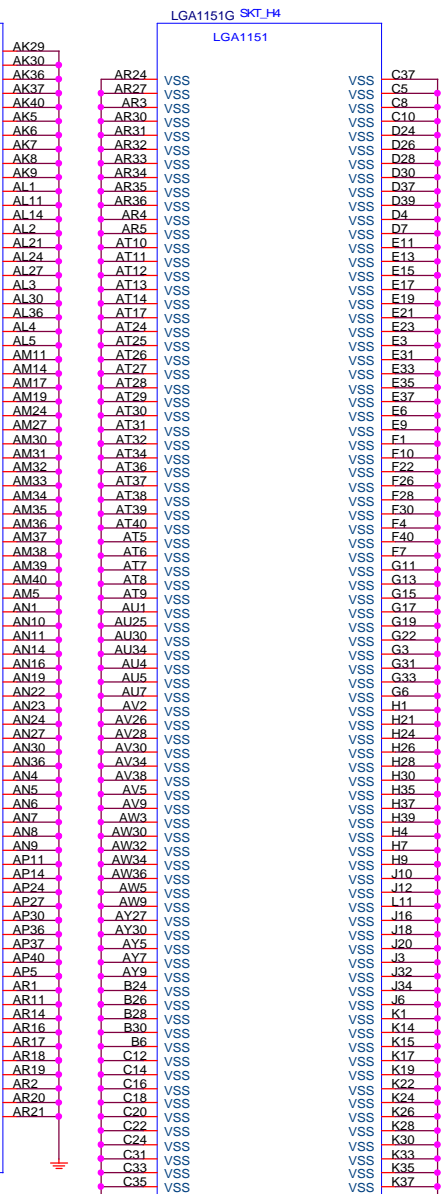
CPU-SK/1151/S/15

\* 刪 Vcore 電容



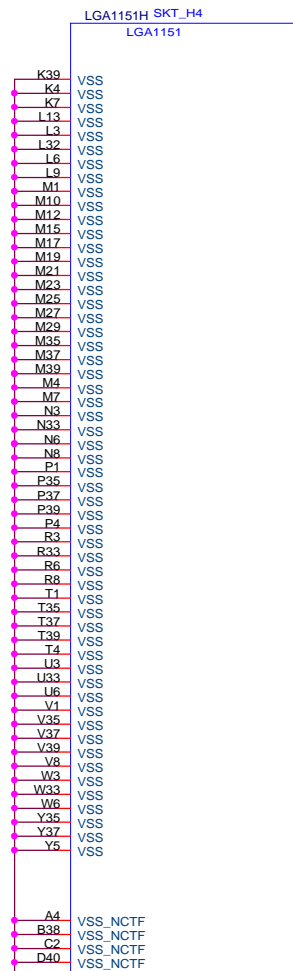
6 OF 12

CPU-SK/1151/S/15



7 OF 12

CPU-SK/1151/S/15



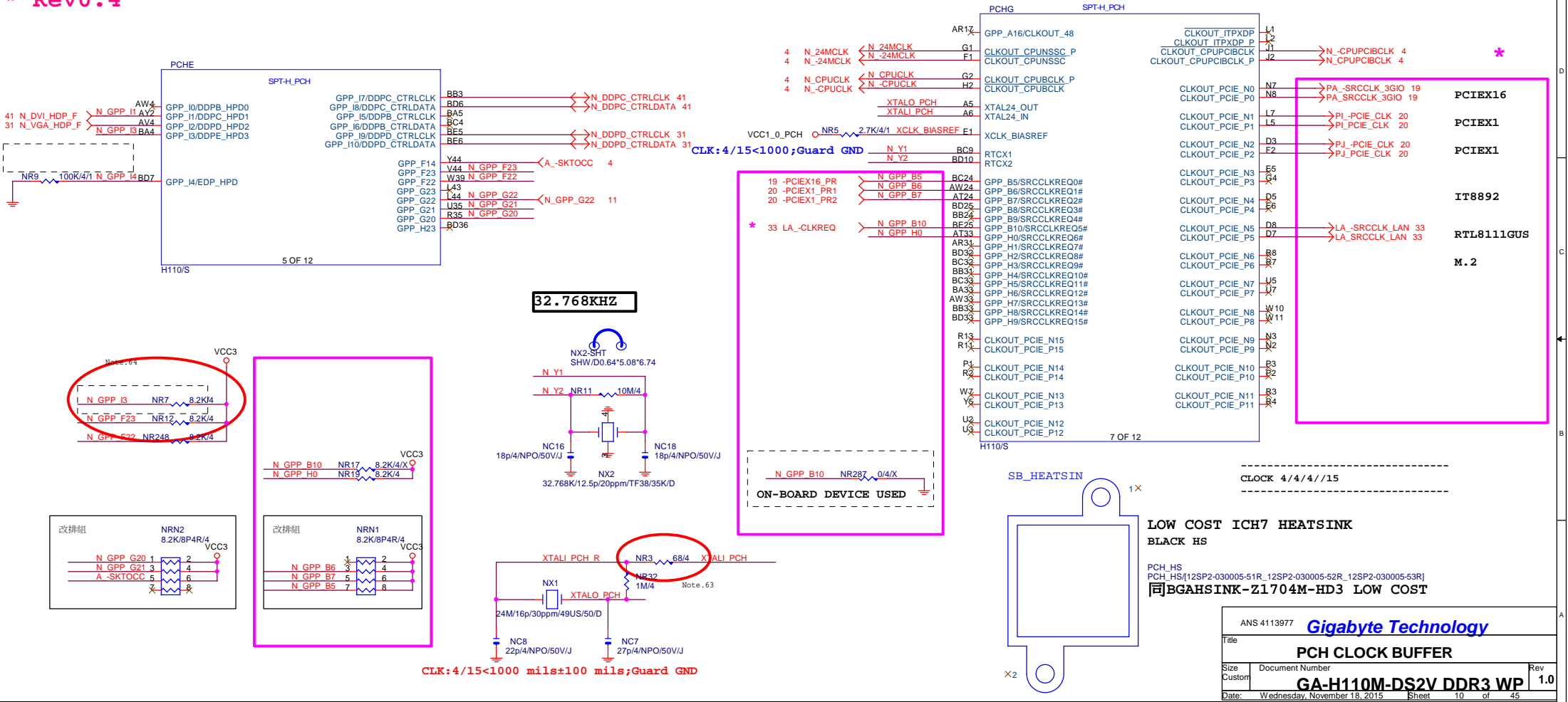
8 OF 12

CPU-SK/1151/S/15



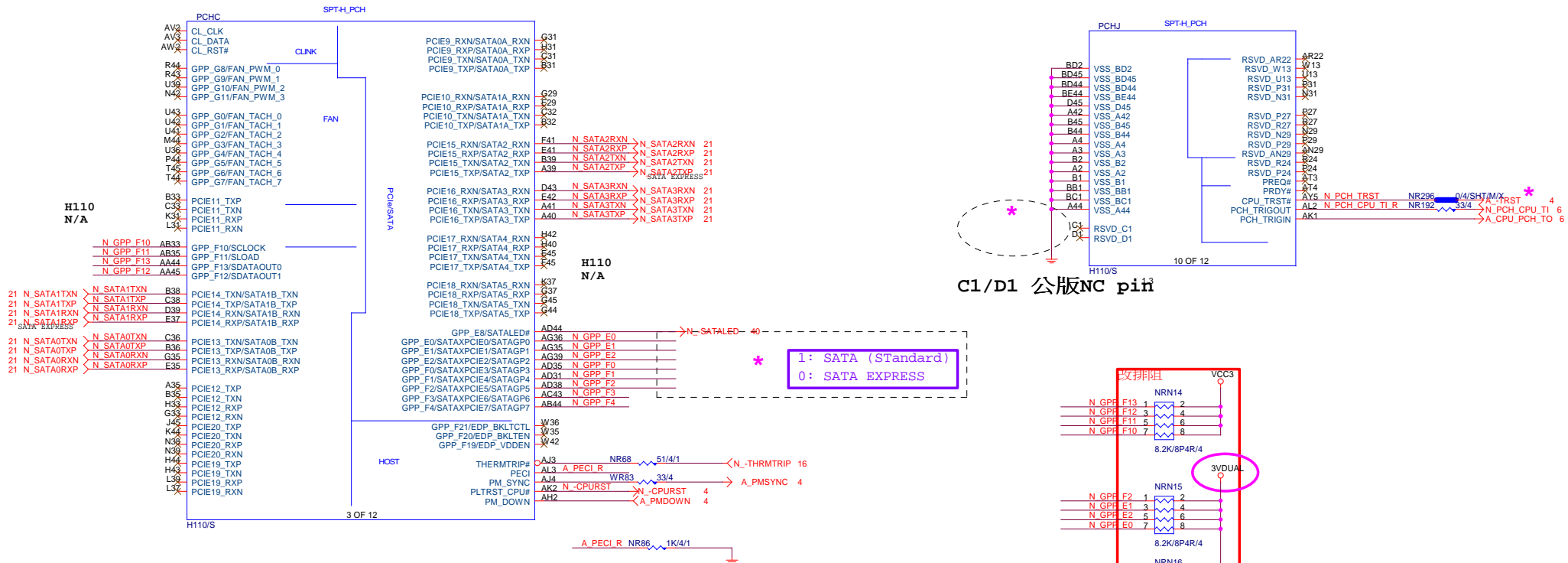


\* Rev0.4







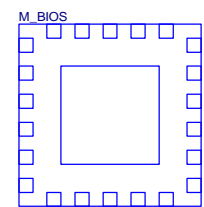
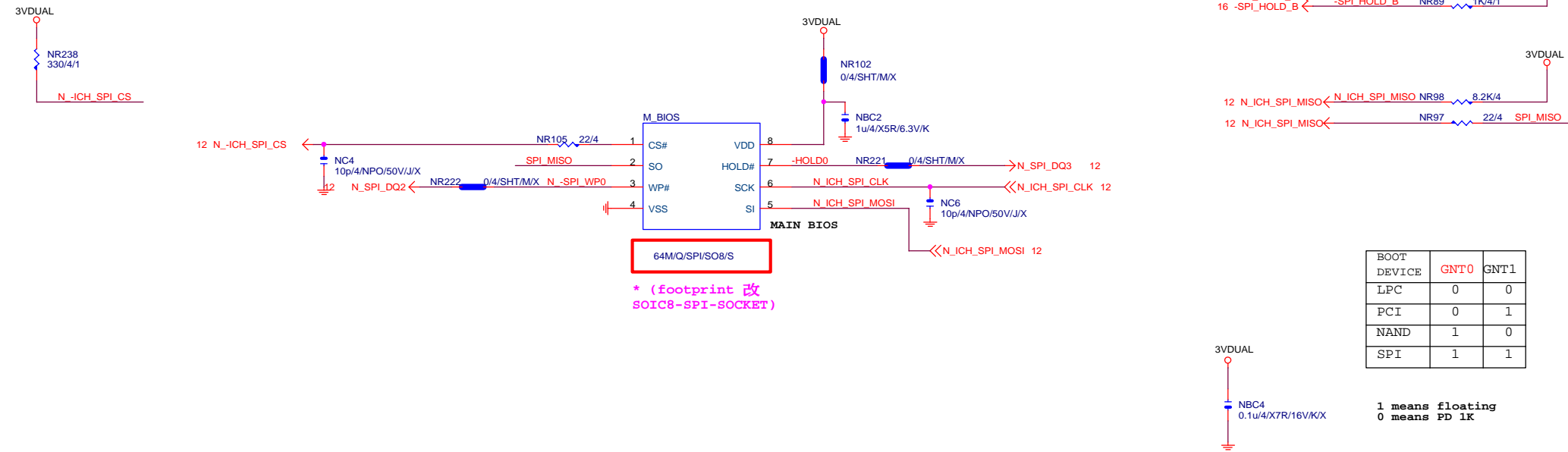




Rev 0.1

BIOS

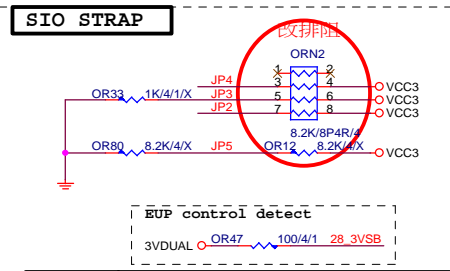
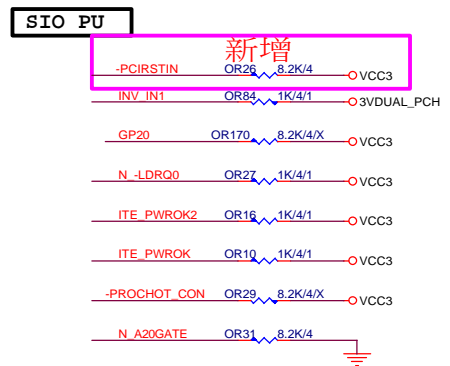
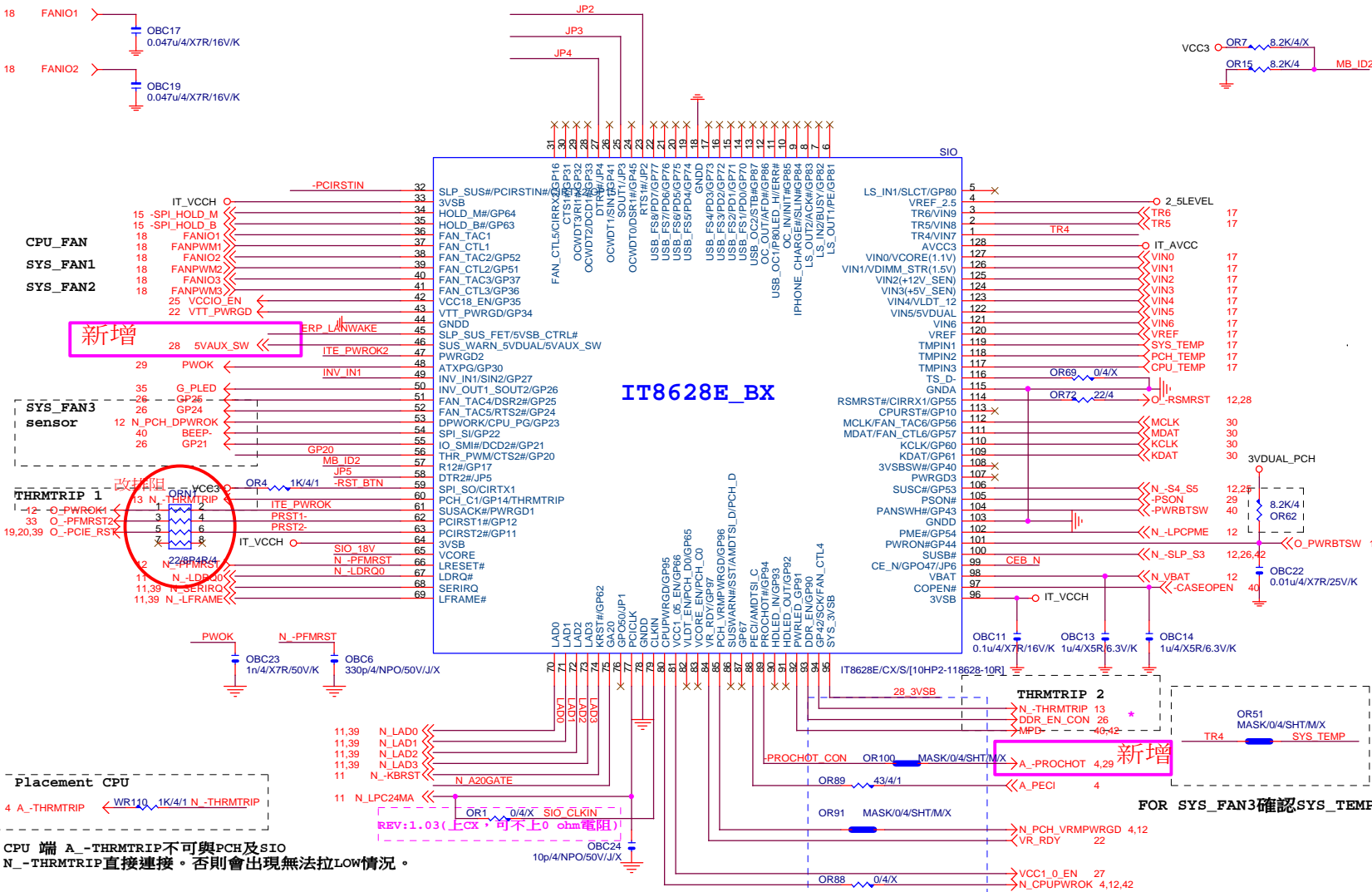
MOSI For DMI RX Termination Voltage



LCP/G-FL/1.27mm/200MIL/WHITE[10SL2-000008-31R]X

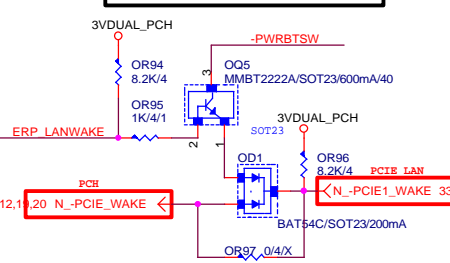
\* 試産先上, PVT 移除

BIOS\_PH



JP2	1	Disable WDT
JP2	0	Enable WDT to rest PWROK
JP3	0	SPI-Flash Disable
JP3	0	SPI-Flash Enable
JP4	1	k8 power sequency function is Disable
JP4	0	k8 power sequency function is Enable
JP5	1	anti-surge Disable
JP5	0	anti-surge Enable
JP3	1 1	The default value of EC Index 63h/6Bh/73h is 80h.
JP3	1 0	The default value of EC Index 63h/6Bh/73h is FFh
JP5	0 1	The default value of EC Index 63h/6Bh/73h is 00h.
JP5	0 0	The default value of EC Index 63h/6Bh/73h is 40h.

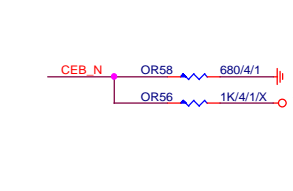
ERP WAKE on LAN (依LAN組態選擇)



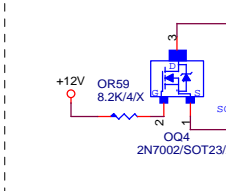
FAN TABLE	
CPU_FAN	FAN_CTL1 FAN_TAC1
SYS_FAN1	FAN_CTL2 FAN_TAC2
SYS_FAN2	FAN_CTL3 FAN_TAC3
SYS_FAN3	FAN_CTL5 FAN_TAC5
OPT FAN or SYS_FAN4	N/A
THRMTRIP1	YES PIN60
THRMTRIP2	YES PIN94

IT8620E GPIO問題匯整	
PIN 50	GP26-第一次接上POWER時會拉 LO
PIN 90/91	DEFAULT為HDLed FUNCTION, GP93 BYPASS TO GP92 高溫時 GP92 會被拉Lo(ITE BUG)
PIN 108	GP40--- POWER ON 時會拉 LO
PIN 111/112	MOUSE 跟FAN6 FUNCTION 擇一使用, 不然會互相干擾
PIN 22	PIN22, 需高於3V, 若低於 將部分COM PORT及LPT裝置 蜂鳴器會異常動作。

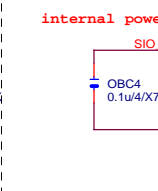
DUAL BIOS OPT STRAP



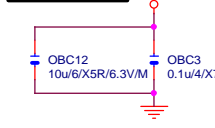
Power leakage



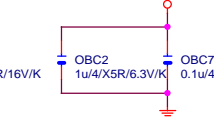
SIO\_18V



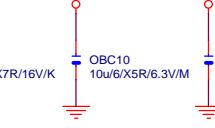
SIO CAP



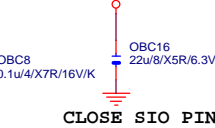
IT\_VCCH



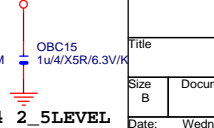
IT\_AVCC



3VDUAL\_PCH



2\_5LEVEL



Gigabyte Technology

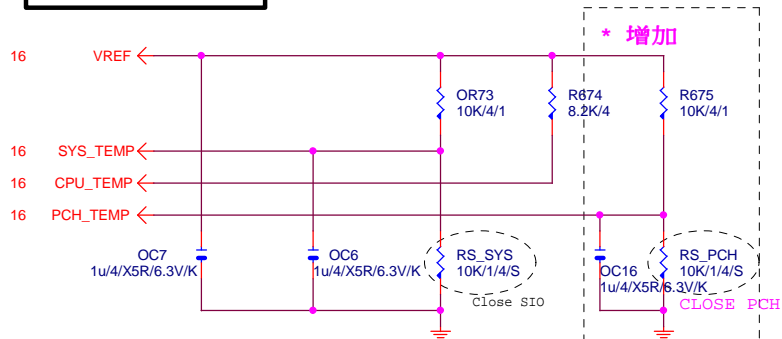
ITE 8628 LPC IO

GA-H110M-DS2V DDR3 WP

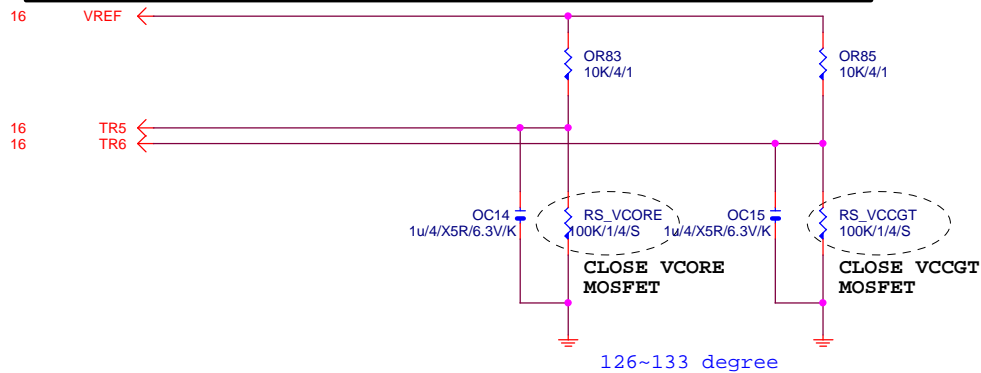
Date: Wednesday, November 18, 2015 Sheet 16 of 45

## TEMP H/W MONITOR

REV 1.04



## RS\_VCORE ~ RS\_VCCGT CLOSE CPU\_VCORE &amp; VCCGT MOSFET

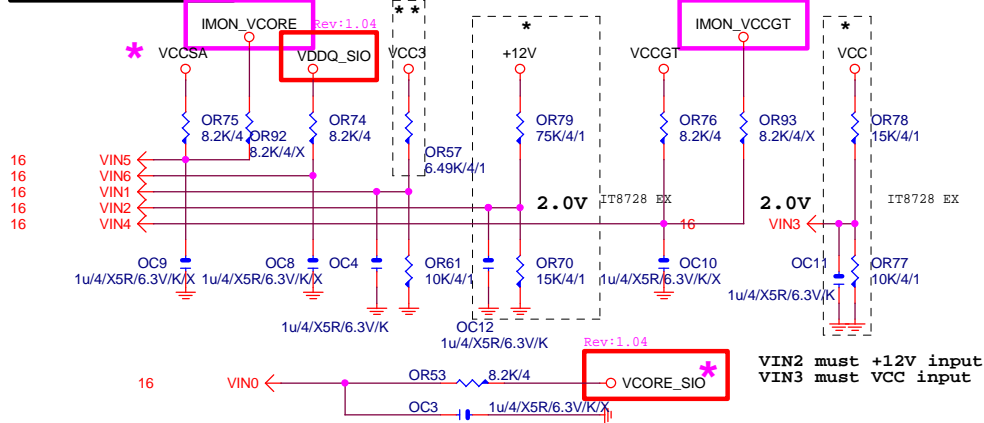
~~PROCHOT: 有mos heartsink不用prochot function~~

## VOLTAGE-- H/W MONITOR

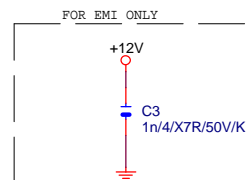
Connect to PWM

\* IT8728 BX  
\*\* IT8728 CX

Connect to PWM



The division voltage of VIN2 &amp; VIN3 must be around 2.9V



Gigabyte Technology

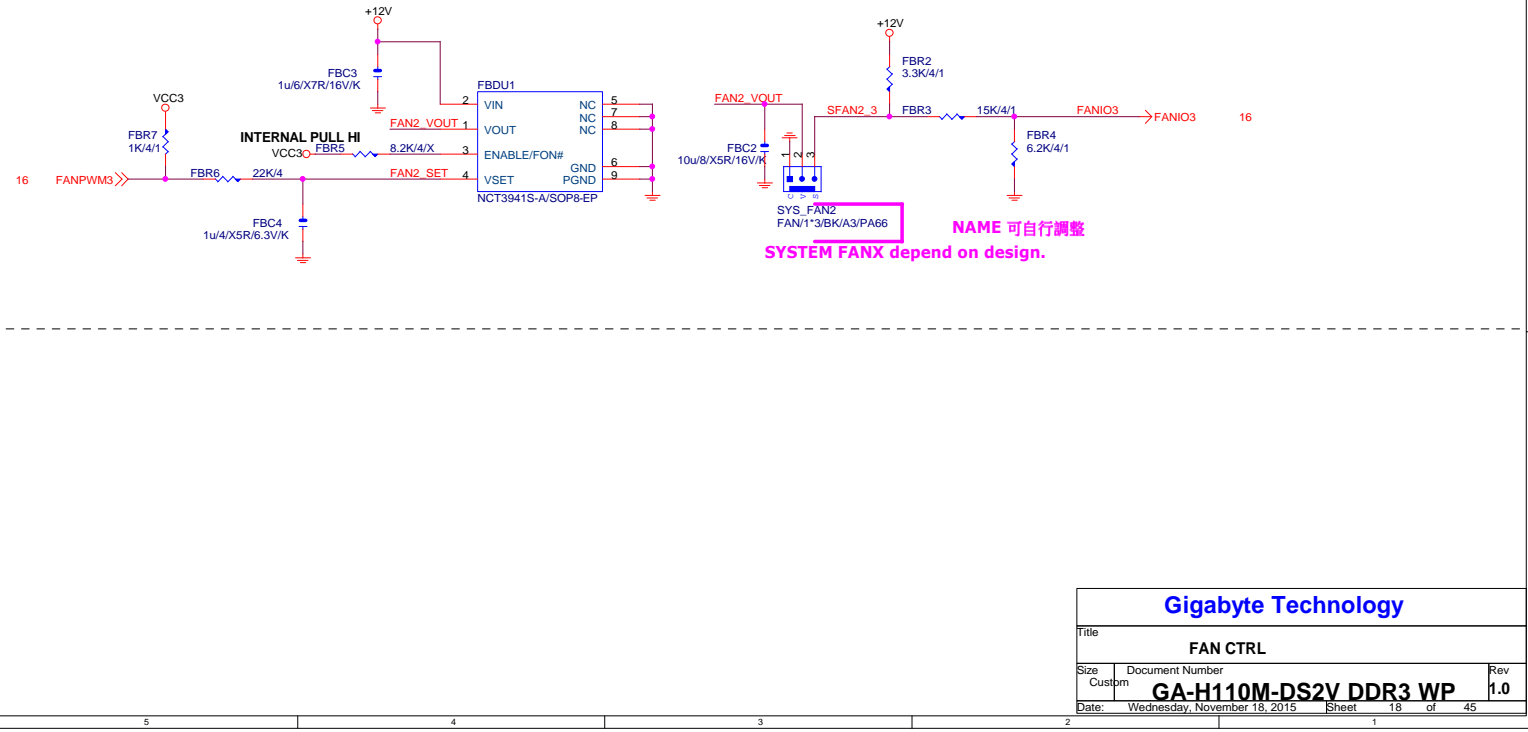
Title			HWM,KB/MS, FAN CTRL	
Size	Document Number		Rev	
Custom	GA-H110M-DS2V DDR3 WP.0			
Date:	Wednesday, November 18, 2015	Sheet	17	of 45

CPU SMART FAN

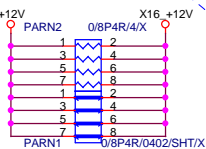
Rev: 0.51

SYSTEM FAN1

SYSTEM FAN2



Rev 0.2

+12V\_protect  
short-wire test

PA\_EXP\_RXP0\_15] >> PA\_EXP\_RXP0[0..15] 4  
 PA\_EXP\_RXN0\_15] >> PA\_EXP\_RXN0[0..15] 4  
 PA\_EXP\_TXP0\_15] >> PA\_EXP\_TXP0[0..15] 4  
 PA\_EXP\_TXN0\_15] >> PA\_EXP\_TXN0[0..15] 4

PA_EXP_TXP0	PAC5	0.22u/4/X5R/6.3V/K	PA_EXP_TXP0 C
PA_EXP_TXN0	PAC4	0.22u/4/X5R/6.3V/K	PA_EXP_TXN0 C
PA_EXP_TXP1	PAC6	0.22u/4/X5R/6.3V/K	PA_EXP_TXP1 C
PA_EXP_TXN1	PAC7	0.22u/4/X5R/6.3V/K	PA_EXP_TXN1 C
PA_EXP_TXP2	PAC8	0.22u/4/X5R/6.3V/K	PA_EXP_TXP2 C
PA_EXP_TXN2	PAC9	0.22u/4/X5R/6.3V/K	PA_EXP_TXN2 C
PA_EXP_TXP3	PAC10	0.22u/4/X5R/6.3V/K	PA_EXP_TXP3 C
PA_EXP_TXN3	PAC11	0.22u/4/X5R/6.3V/K	PA_EXP_TXN3 C
PA_EXP_TXP4	PAC12	0.22u/4/X5R/6.3V/K	PA_EXP_TXP4 C
PA_EXP_TXN4	PAC13	0.22u/4/X5R/6.3V/K	PA_EXP_TXN4 C
PA_EXP_TXP5	PAC14	0.22u/4/X5R/6.3V/K	PA_EXP_TXP5 C
PA_EXP_TXN5	PAC15	0.22u/4/X5R/6.3V/K	PA_EXP_TXN5 C
PA_EXP_TXP6	PAC16	0.22u/4/X5R/6.3V/K	PA_EXP_TXP6 C
PA_EXP_TXN6	PAC17	0.22u/4/X5R/6.3V/K	PA_EXP_TXN6 C
PA_EXP_TXP7	PAC18	0.22u/4/X5R/6.3V/K	PA_EXP_TXP7 C
PA_EXP_TXN7	PAC19	0.22u/4/X5R/6.3V/K	PA_EXP_TXN7 C
PA_EXP_TXP8	PAC21	0.22u/4/X5R/6.3V/K	PA_EXP_TXP8 C
PA_EXP_TXN8	PAC20	0.22u/4/X5R/6.3V/K	PA_EXP_TXN8 C
PA_EXP_TXP9	PAC22	0.22u/4/X5R/6.3V/K	PA_EXP_TXP9 C
PA_EXP_TXN9	PAC23	0.22u/4/X5R/6.3V/K	PA_EXP_TXN9 C
PA_EXP_TXP10	PAC24	0.22u/4/X5R/6.3V/K	PA_EXP_TXP10 C
PA_EXP_TXN10	PAC25	0.22u/4/X5R/6.3V/K	PA_EXP_TXN10 C
PA_EXP_TXP11	PAC26	0.22u/4/X5R/6.3V/K	PA_EXP_TXP11 C
PA_EXP_TXN11	PAC27	0.22u/4/X5R/6.3V/K	PA_EXP_TXN11 C
PA_EXP_TXP12	PAC28	0.22u/4/X5R/6.3V/K	PA_EXP_TXP12 C
PA_EXP_TXN12	PAC29	0.22u/4/X5R/6.3V/K	PA_EXP_TXN12 C
PA_EXP_TXP13	PAC30	0.22u/4/X5R/6.3V/K	PA_EXP_TXP13 C
PA_EXP_TXN13	PAC31	0.22u/4/X5R/6.3V/K	PA_EXP_TXN13 C
PA_EXP_TXP14	PAC32	0.22u/4/X5R/6.3V/K	PA_EXP_TXP14 C
PA_EXP_TXN14	PAC33	0.22u/4/X5R/6.3V/K	PA_EXP_TXN14 C
PA_EXP_TXP15	PAC34	0.22u/4/X5R/6.3V/K	PA_EXP_TXP15 C
PA_EXP_TXN15	PAC35	0.22u/4/X5R/6.3V/K	PA_EXP_TXN15 C

PCIE16:16/5/5/5/16

PCI-E REV:1.1--&gt; 2.5GHZ

PCE-E X1(單向) BANDWIDTH=2.5GHz\*(8b/10b)=2Gb/s=250MB/s

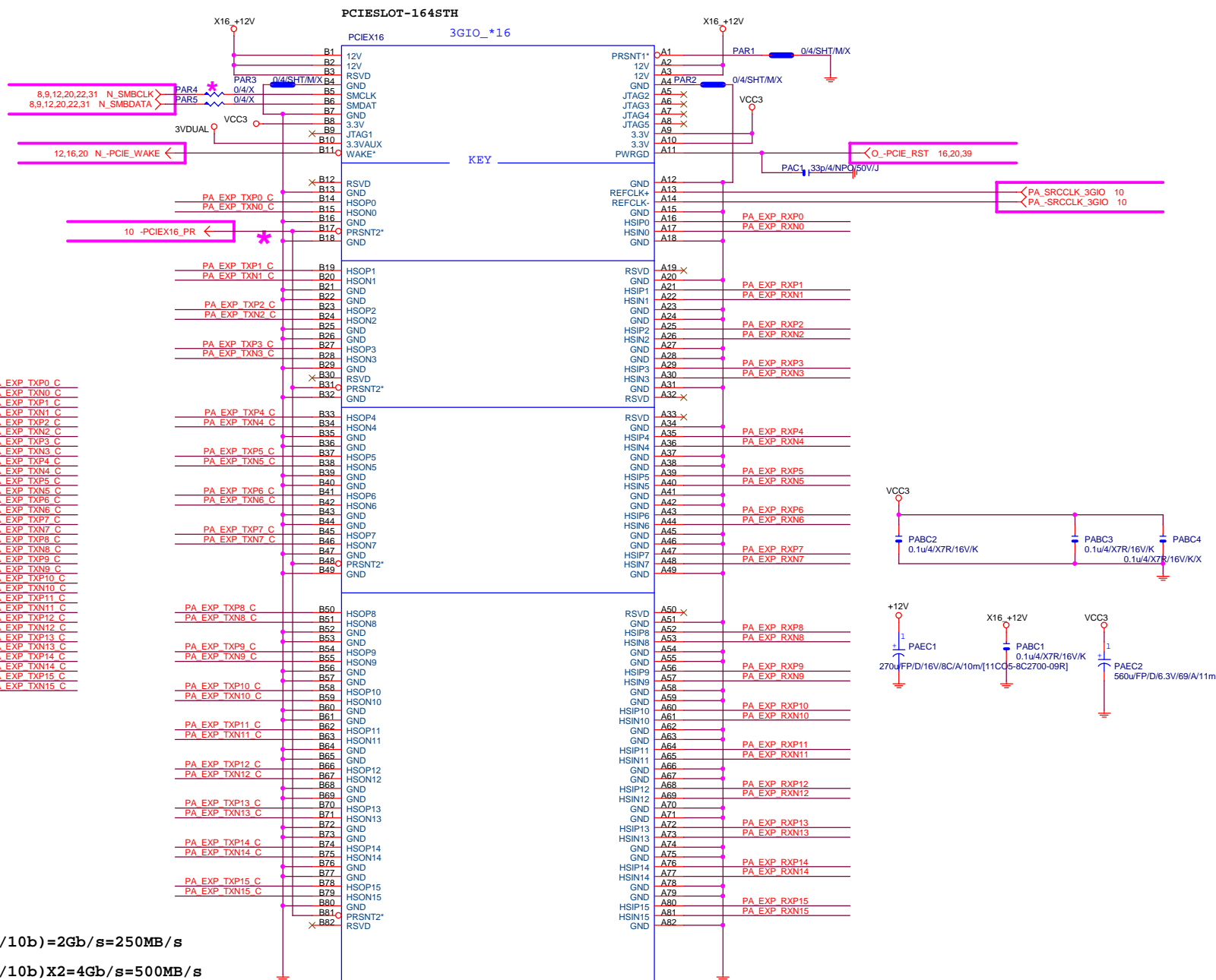
PCE-E X1(雙向) BANDWIDTH=2.5GHz\*(8b/10b)X2=4Gb/s=500MB/s

PCE-E X16(單向) BANDWIDTH=2.5GHz\*(8b/10b)X16=32Gb/s=4GB/s

PCE-E X16(雙向) BANDWIDTH=2.5GHz\*(8b/10b)X16X2=64Gb/s=8GB/s

PCI-E REV:2.0--&gt; 5GHZ

PCIESLOT-1645TH



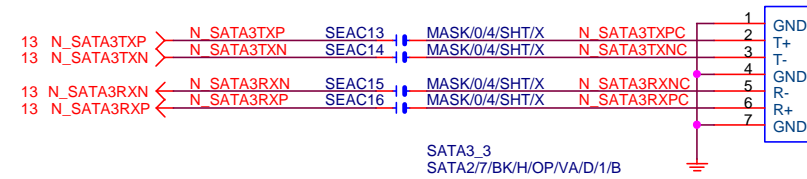
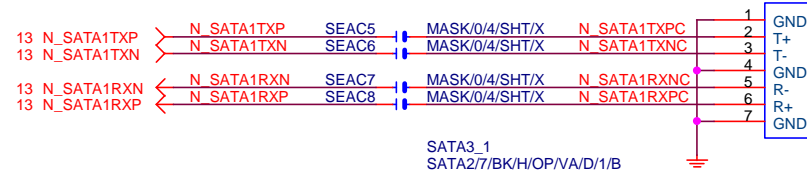
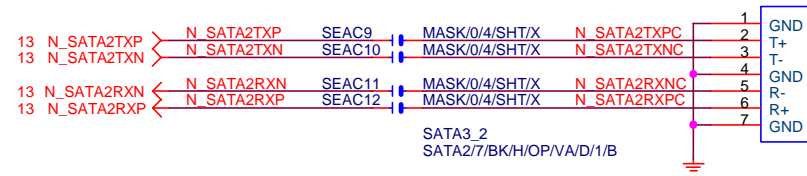
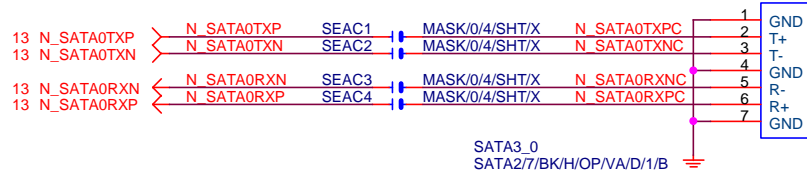
PCI-E/16X-164P/GY/LONG DOUBLE/HK\*2

Gigabyte Technology

Title			
PCI EXPRESS * 16			
Size	Document Number	Rev	
Custom	GA-H110M-DS2V DDR3 WP	1.0	
Date:	Wednesday, November 18, 2015	Sheet	19 of 45

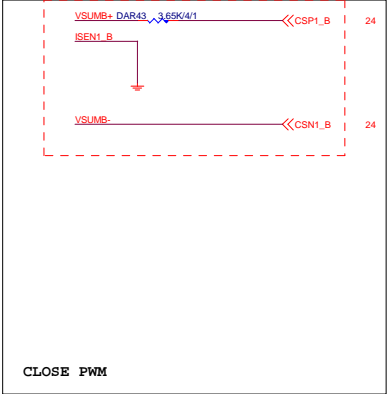
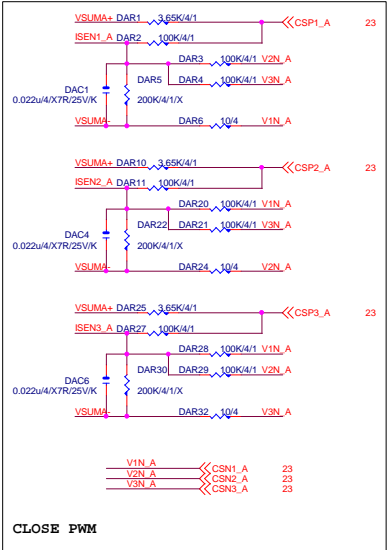
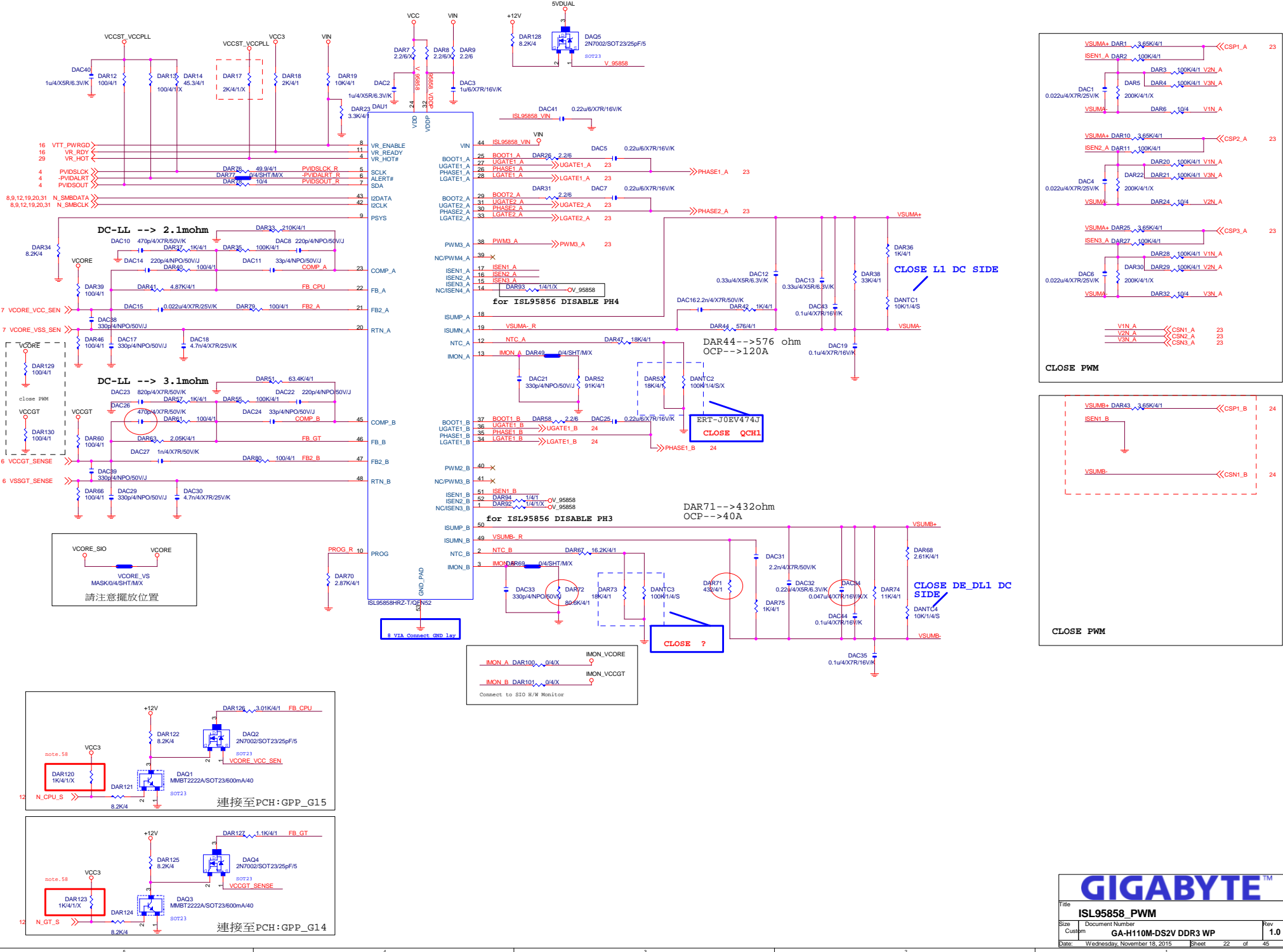


Rev 0.6



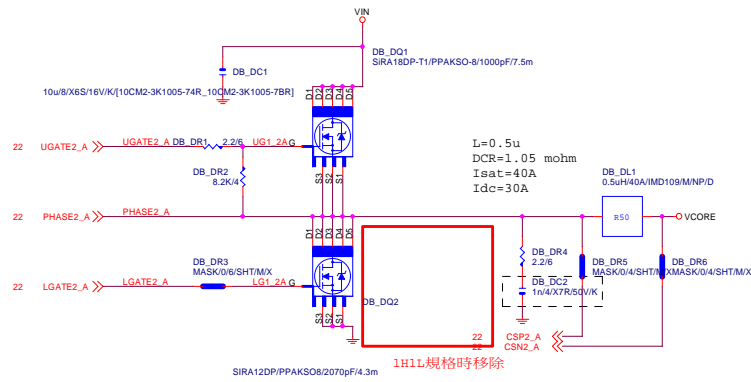
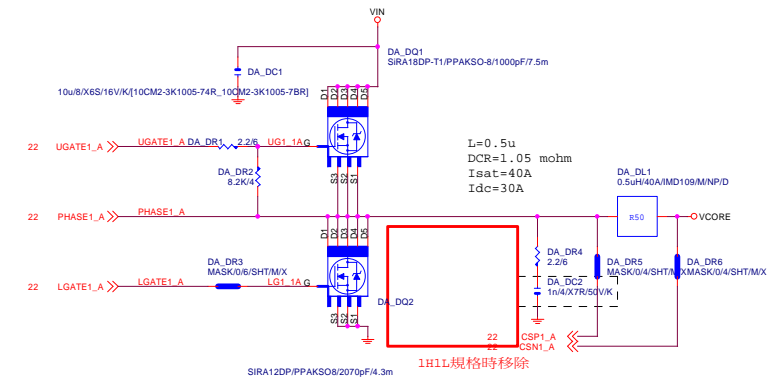
Gigabyte Technology

Title			
SATA EXPRESS			
Size	Document Number		
Custom	GA-H110M-DS2V DDR3 WP		
Date:	Wednesday, November 18, 2015	Sheet	21 of 45
			Rev 1.0

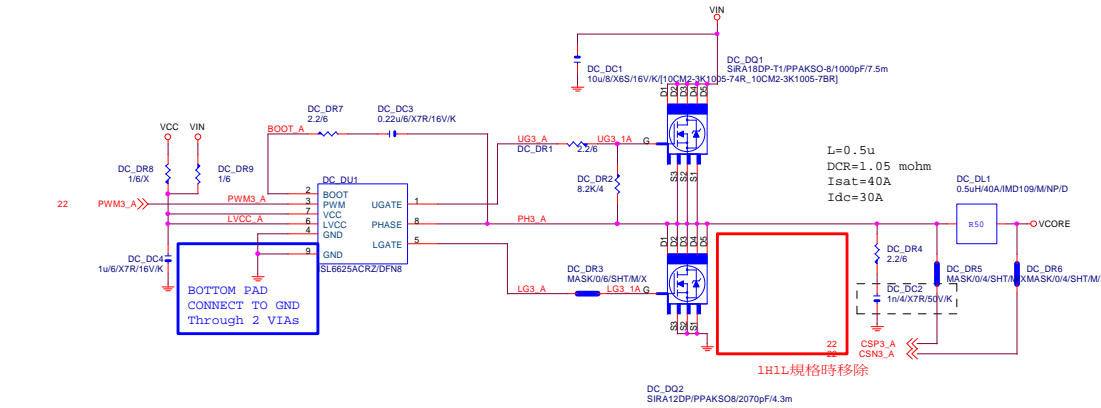
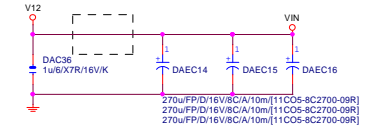


REV:0.14

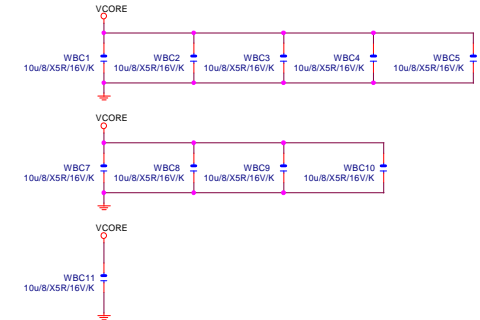
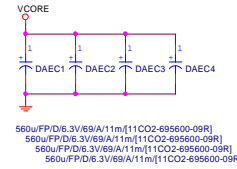
# VCORE



VIN CAP 270u\*3PCS



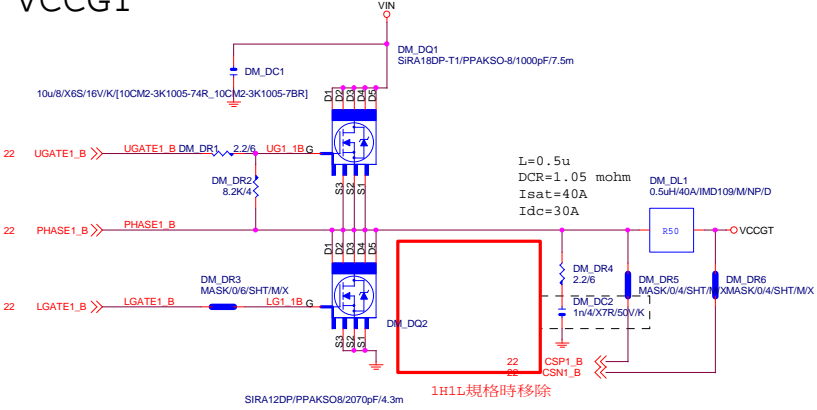
VCORE CAP 560u\*4PCS  
22u\*10PCS



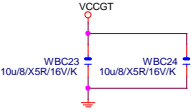
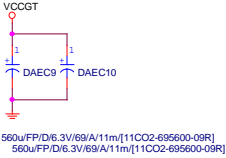
GIGABYTE™

Title		
ISL95858_MOS		
Size	Document Number	Rev
Custom	GA-H110M-DS2V DDR3 WP	1.0
Date:	Wednesday, November 18, 2015	Sheet 23 of 45

VCCGT



VCCGT CAP 560u\*2PCS  
22u\*2PCS

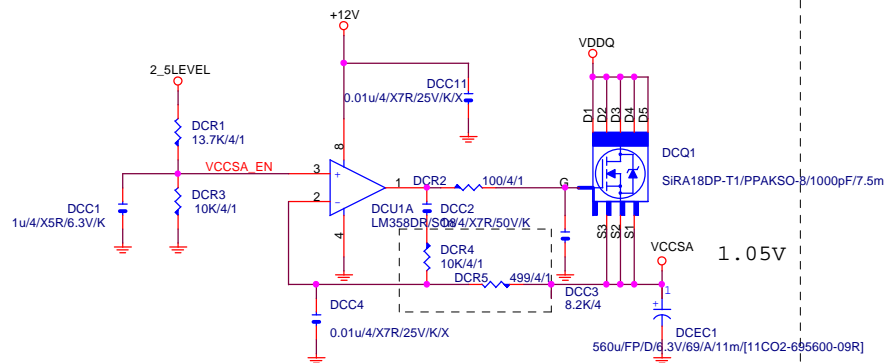


GIGABYTE™

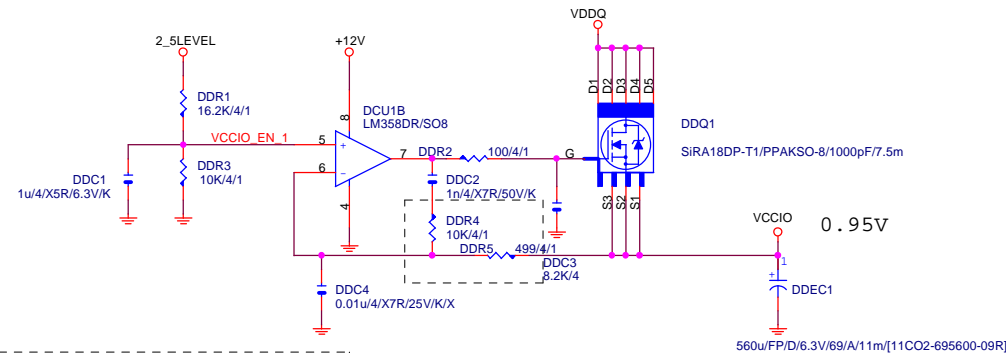
Title		
ISL95858_MOS		
Size	Document Number	Rev
Custom	GA-H110M-DS2V DDR3 WP	1.0
Date:	Wednesday, November 18, 2015	Sheet 24 of 45

VCCSA

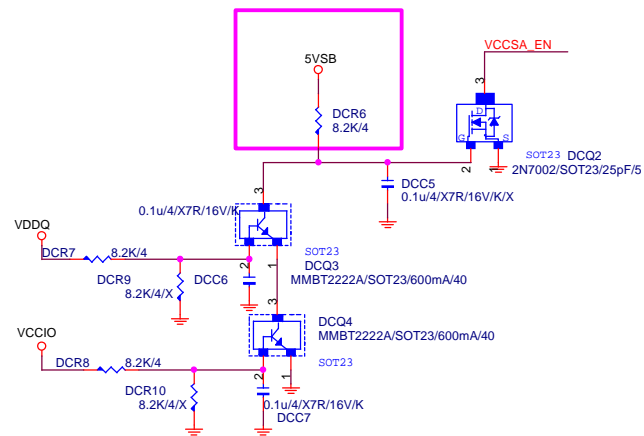
REV:0.4



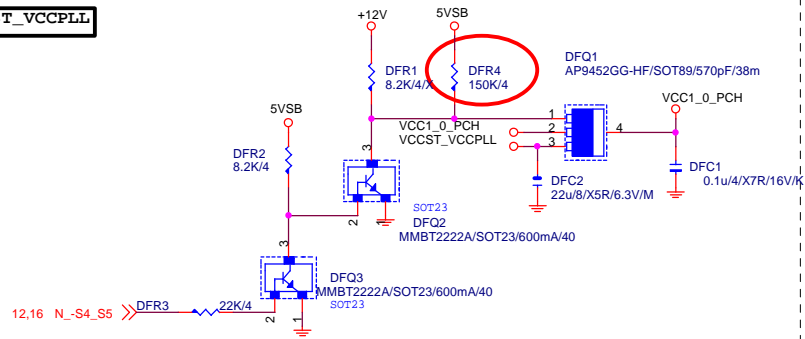
VCCIO



VCCIO\_EN\_1 DDR10 0/4/SHT/M/X VCCIO\_EN 16  
Connect to IT8620



VCCST\_VCCPLL



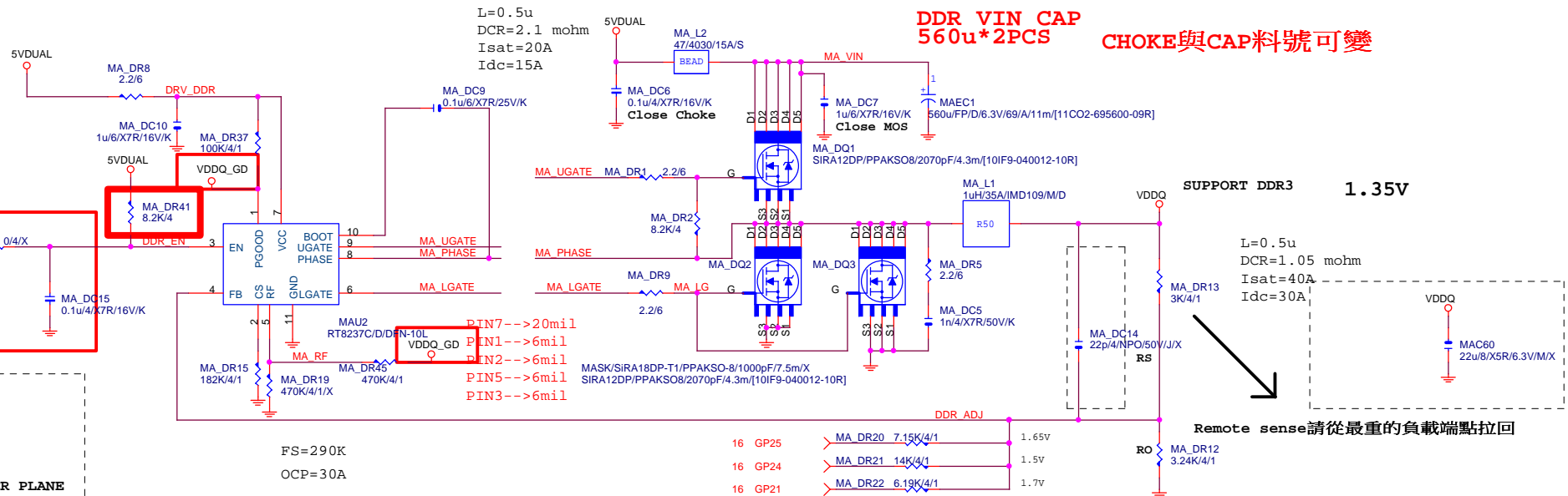
VCCST\_VCCPLL  
DFC3 22u/8/X5R/6.3V/M

# GIGABYTE™

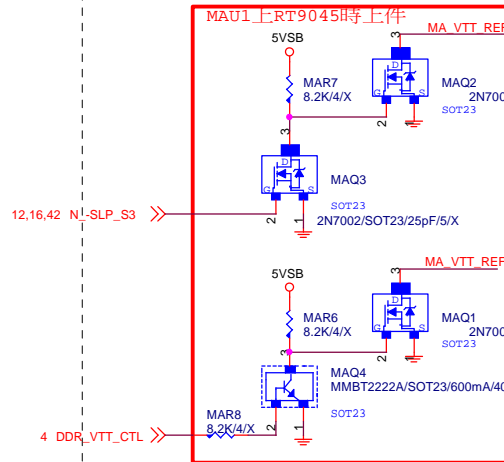
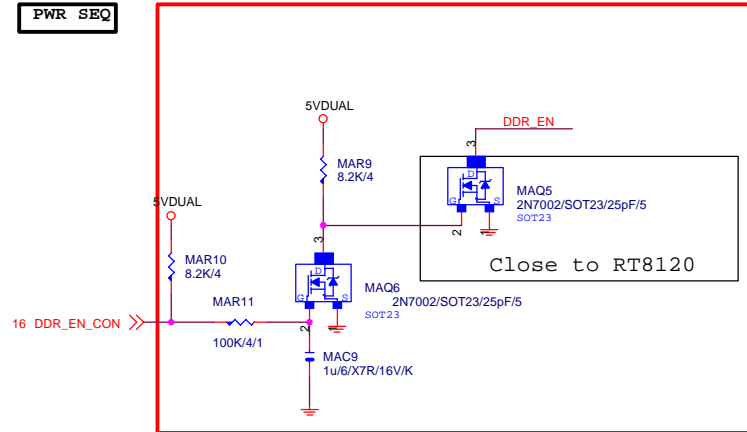
Title		VCCSA_VCCIO
Size	Document Number	Rev
Custom	GA-H110M-DS2V DDR3 WP	1.0
Date:	Wednesday, November 18, 2015	Sheet 25 of 45

REV:0.25

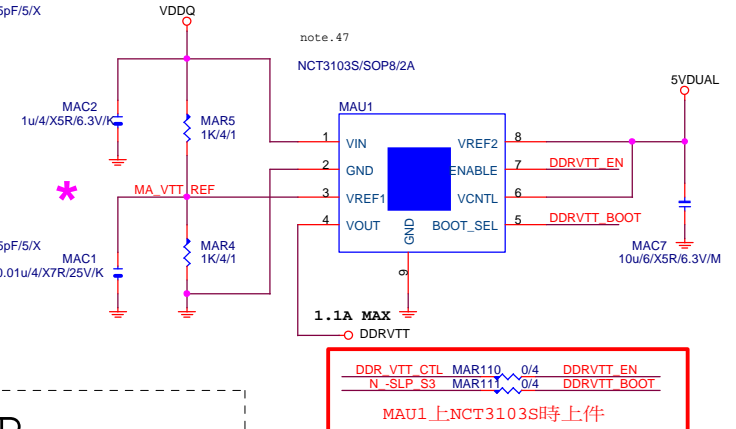
DDR3



PWR SEQ



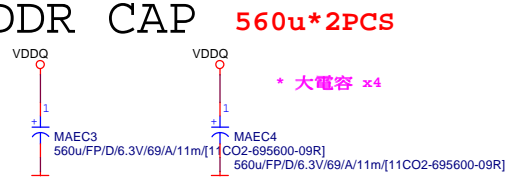
DDRVTT



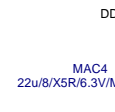
DDR CAP 560u\*2PCS

10u\*1PCS

\* 大電容 x4



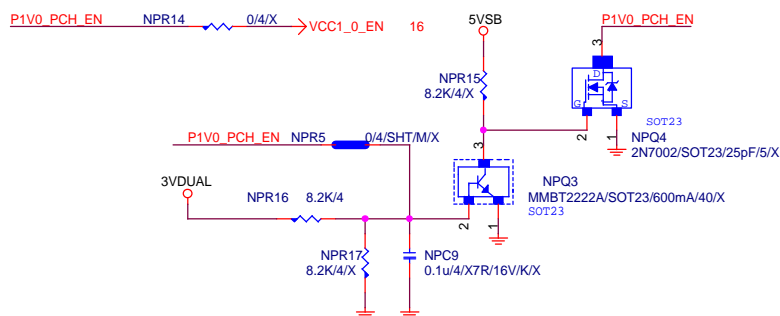
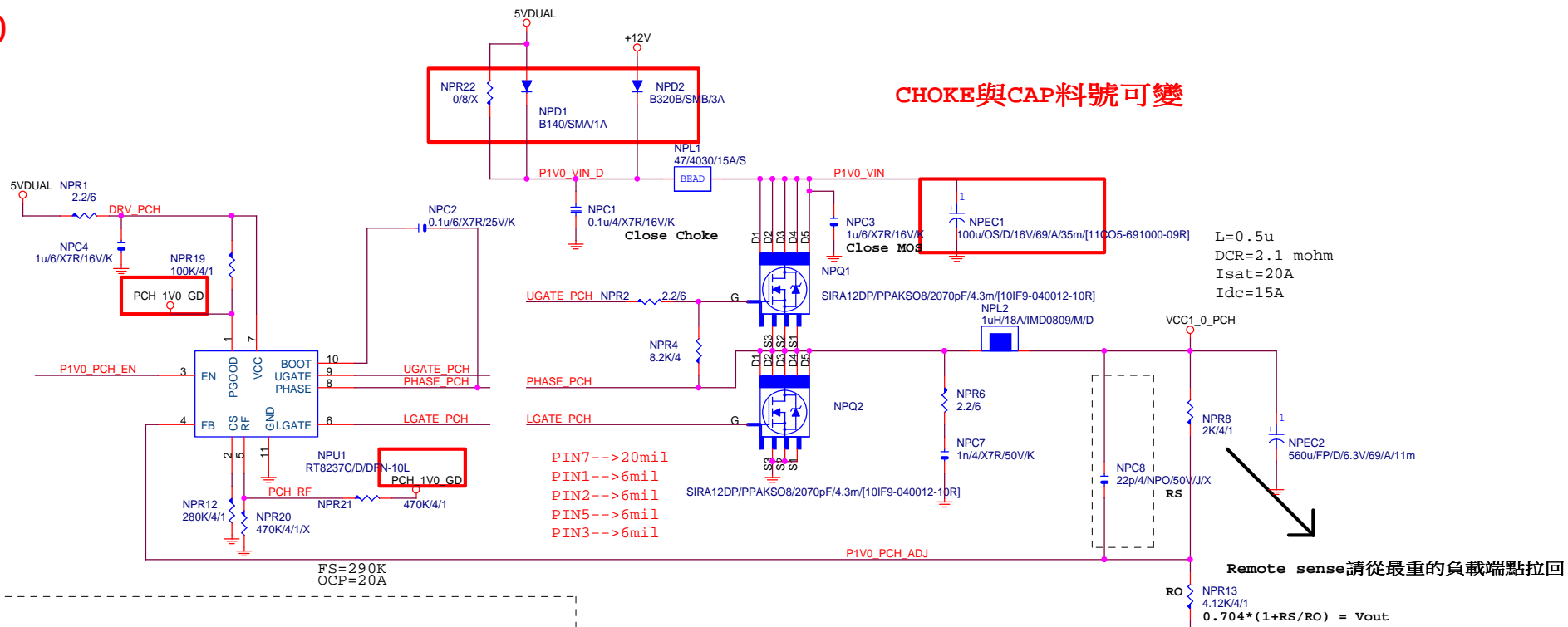
DDRVTT CAP




GIGABYTE™

Title			
RT8237_DDR3 POWER			
Size	Document Number	Rev	
Custom	GA-H110M-DS2V DDR3 WP	1.0	
Date:	Wednesday, November 18, 2015	Sheet	26 of 45

REV:0.50

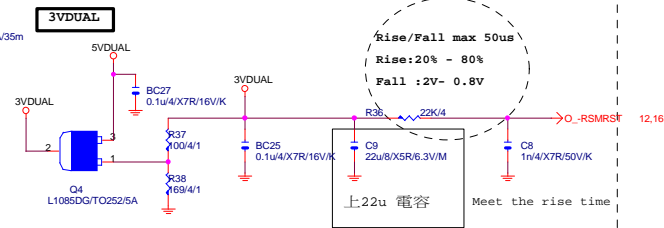
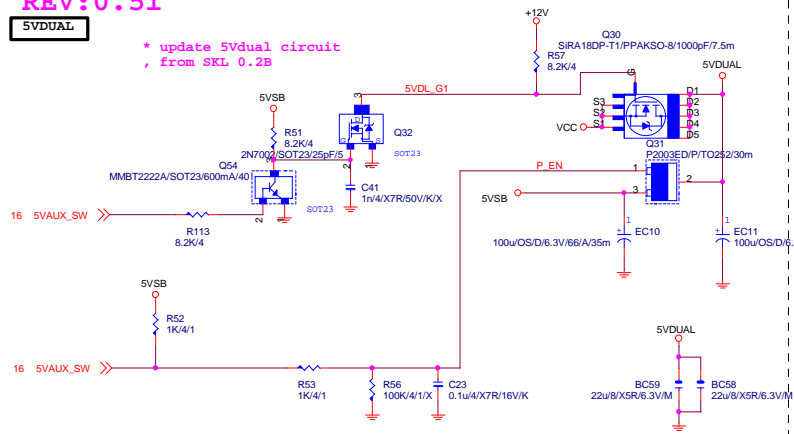


請放置CHOKE一出來的地方

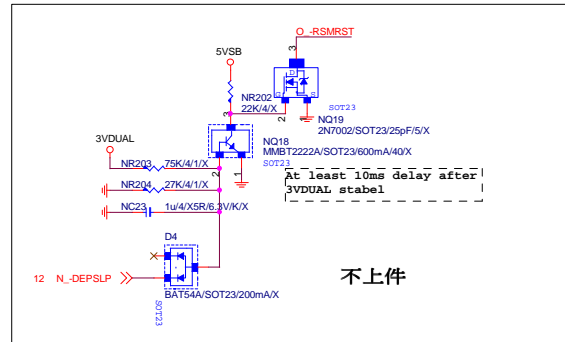
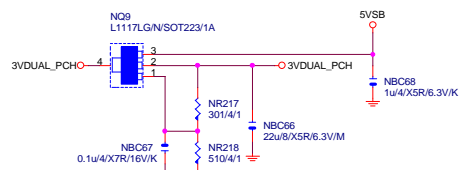
			
Title			
<b>RT8237_PCH POWER</b>			
Size	Document Number		Rev
Custom	<b>GA-H110M-DS2V DDR3 WP</b>		<b>1.0</b>
Date:	Wednesday, November 18, 2015	Sheet 27 of 45	

## 5VDUAL

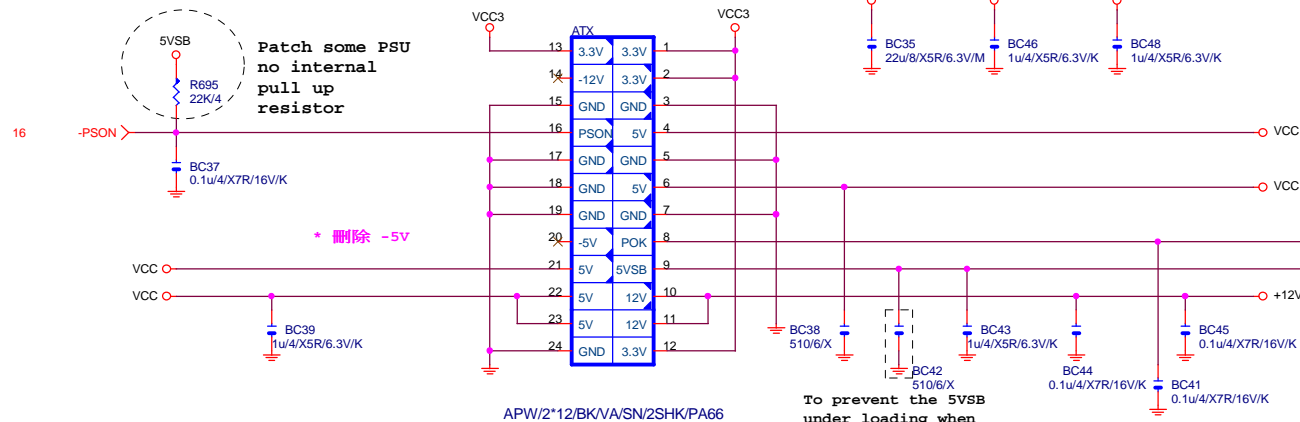
```
* update 5Vdual circuit
, from SKL 0.2B
```



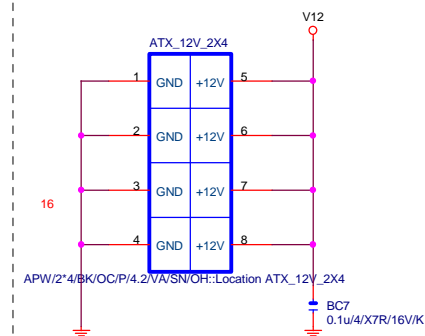
## 3VDUAL\_PCH



## ATXX24 POWER CONNECTOR

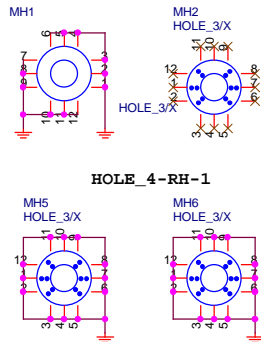


## ATXX4 POWER CONNECTOR



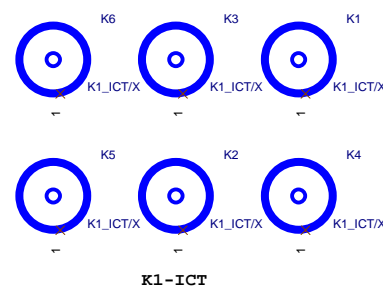
## 螺絲孔

MH1:GND-T  
FOR EMI  
TEST驗證



14/12/24  
Modify for EMI

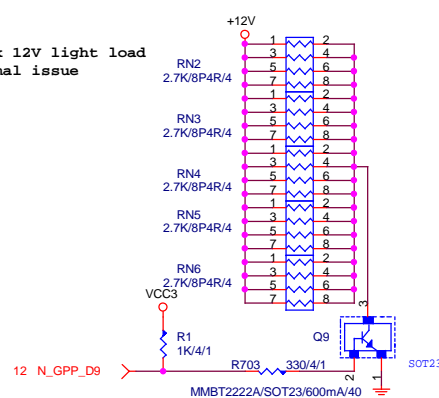
## 固定孔/光學點



To prevent the 5VSB  
under loading when  
boot

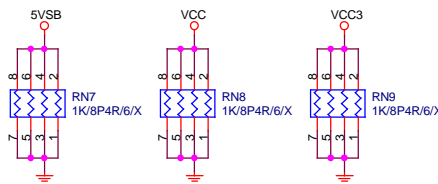
## +12V DUMMY LOAD

To fix 12V light load  
abnormal issue



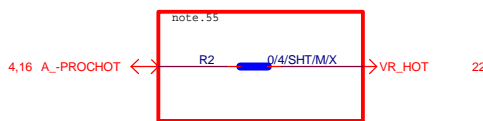
【技術通報R&D技術通報153】

## DUMMY LOAD

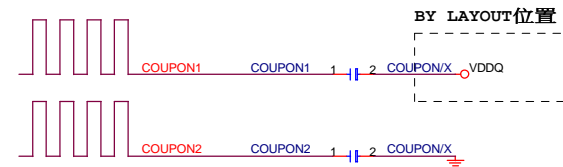


## -PROHOT

\* 保留 ?



## COUPON

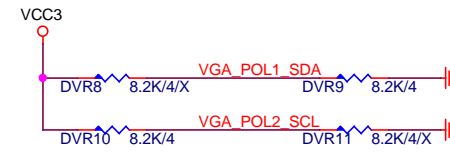
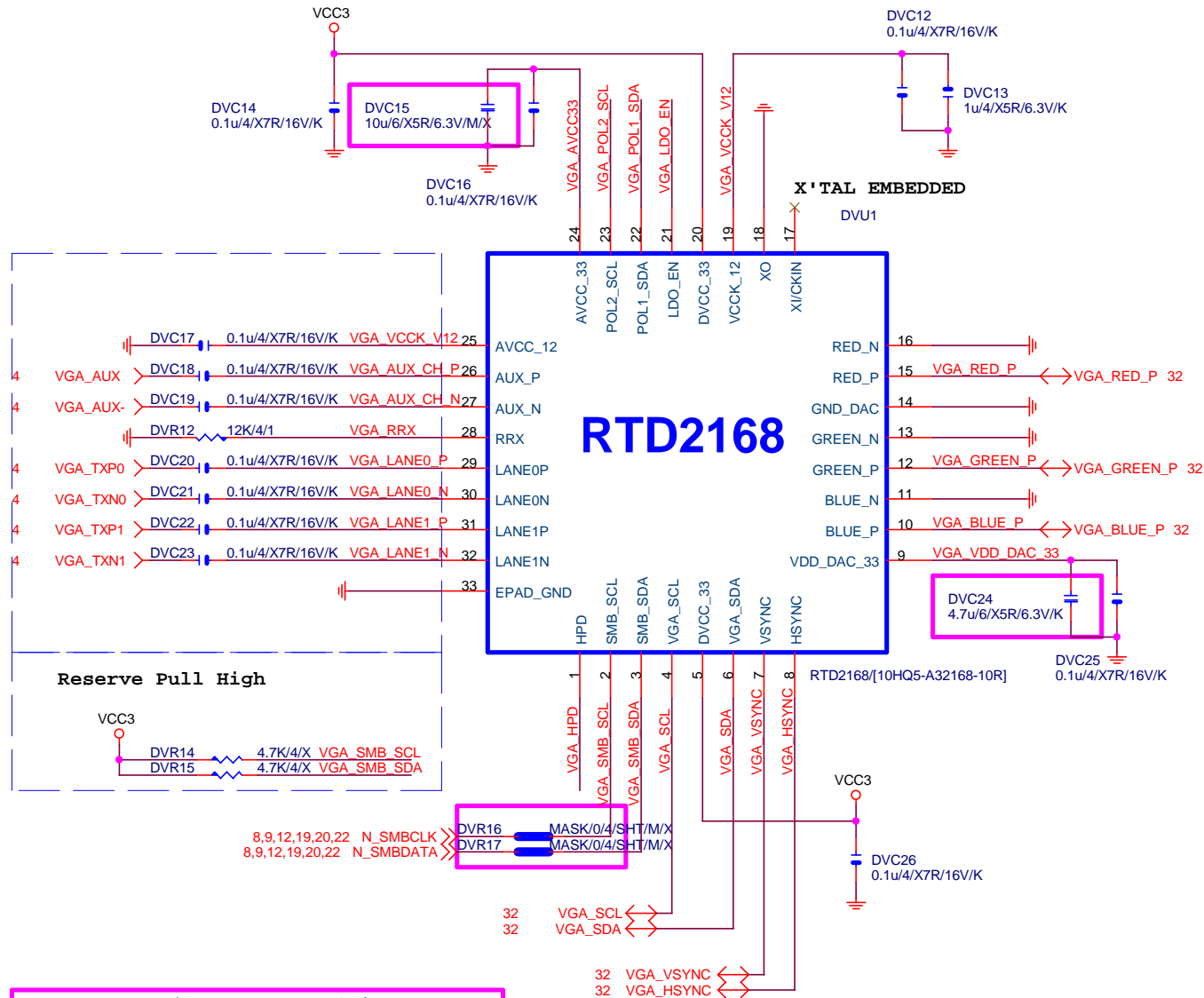


BY LAYOUT位置

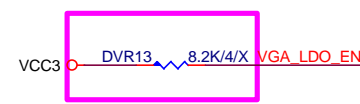
## Gigabyte Technology

Title		ATX POWER CONNECTOR	
Size	Custom	Document Number	GA-H110M-DS2V DDR3 WP
Date:	Wednesday, November 18, 2015	Sheet	29 of 45





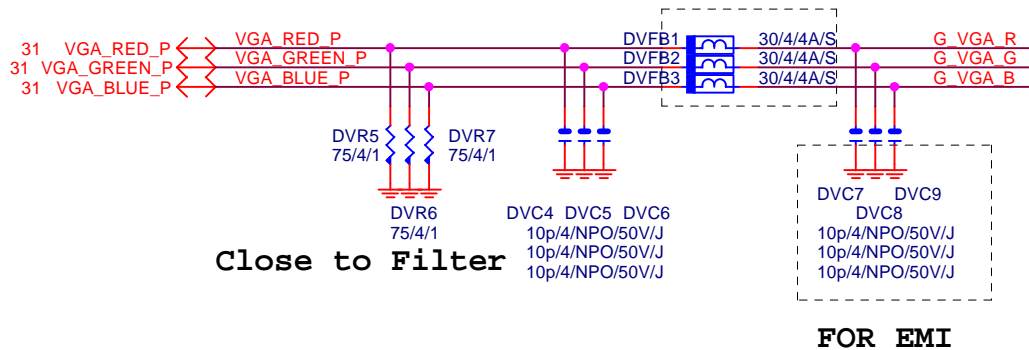
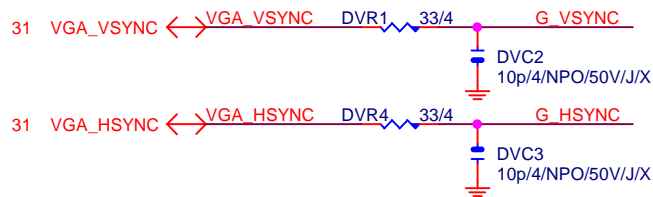
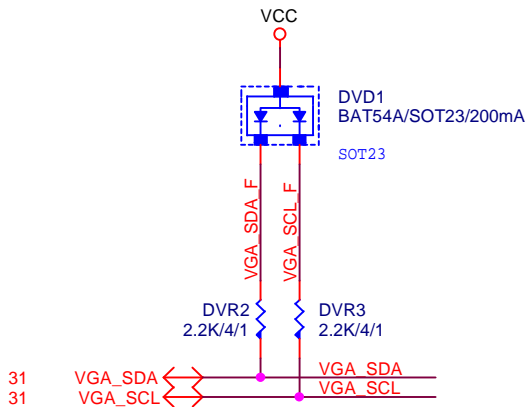
		POL1_SDA(PIN22)	
		0	1
POL2_SCL (PIN23)	0	X	EP MODE
	1	ROM ONLY MODE	EEPROM MODE



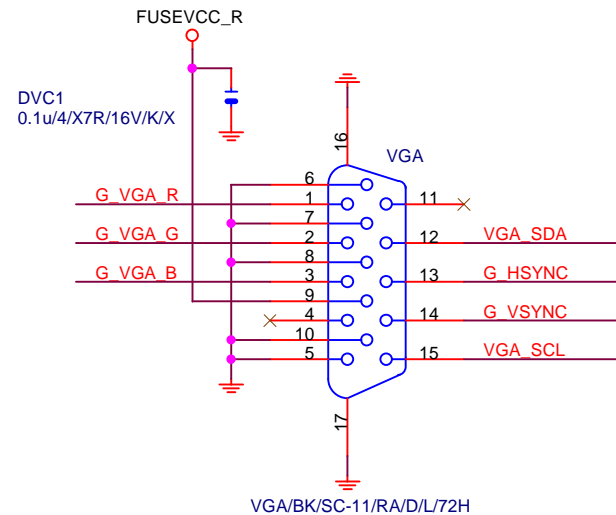
LDO_EN(PIN21)	
0	1
VCC3	VCC3
VCC3	VCC3



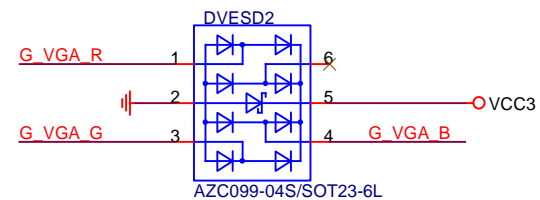
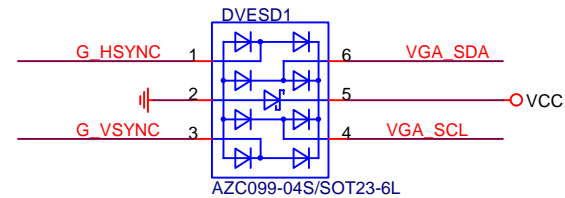
# VGA SIGNAL R1.02



# VGA CONN.



# VGA ESD

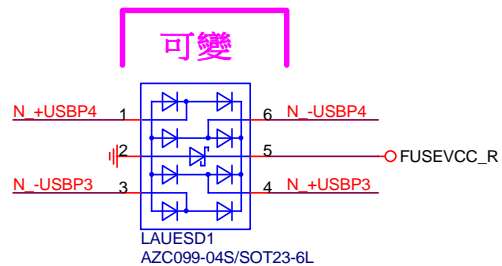


Gigabyte Technology			
RTD2168			
Title			
Size Custom	Document Number	GA-H110M-DS2V DDR3 WP	
Date:	Wednesday, November 18, 2015	Sheet	32 of 45



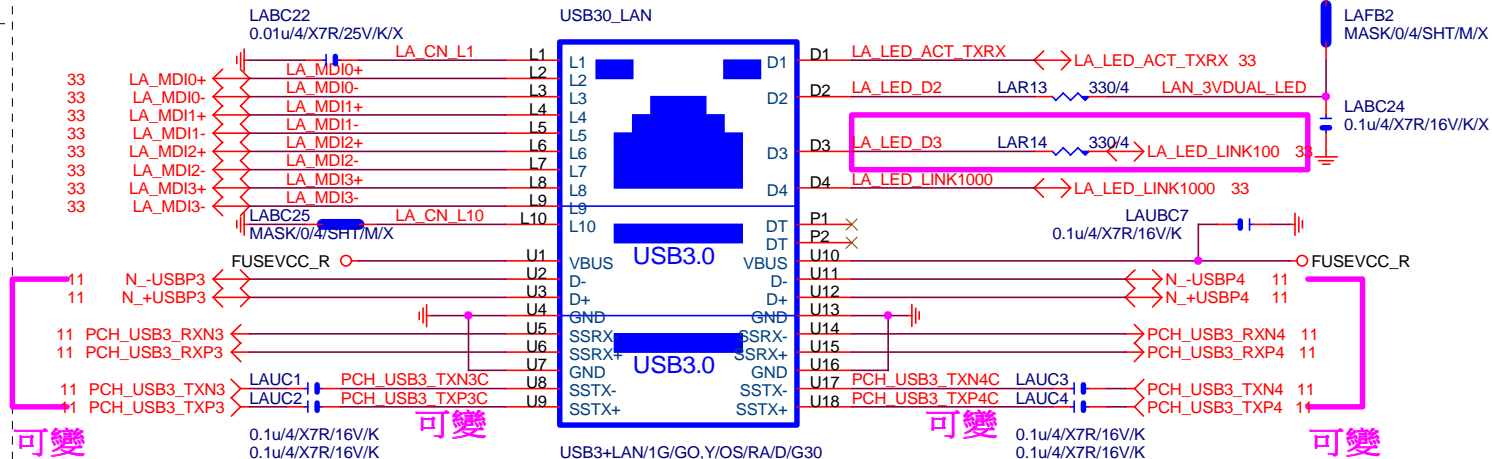
## R1.06

note:可變更USB NAME



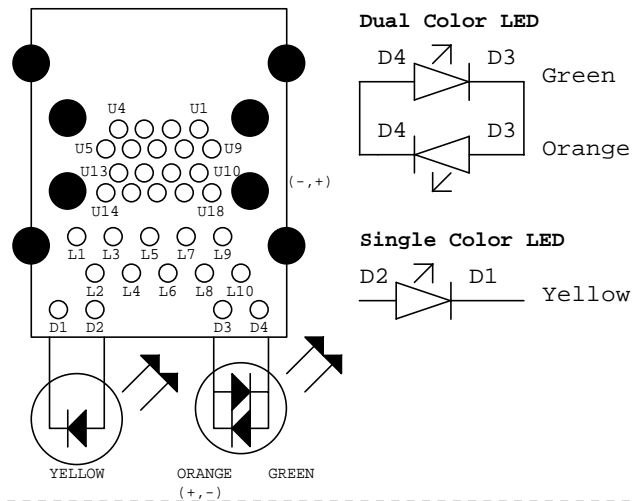
note:可變更USB NAME

LABC22  
0.01u/4/X7R/25V/K/X

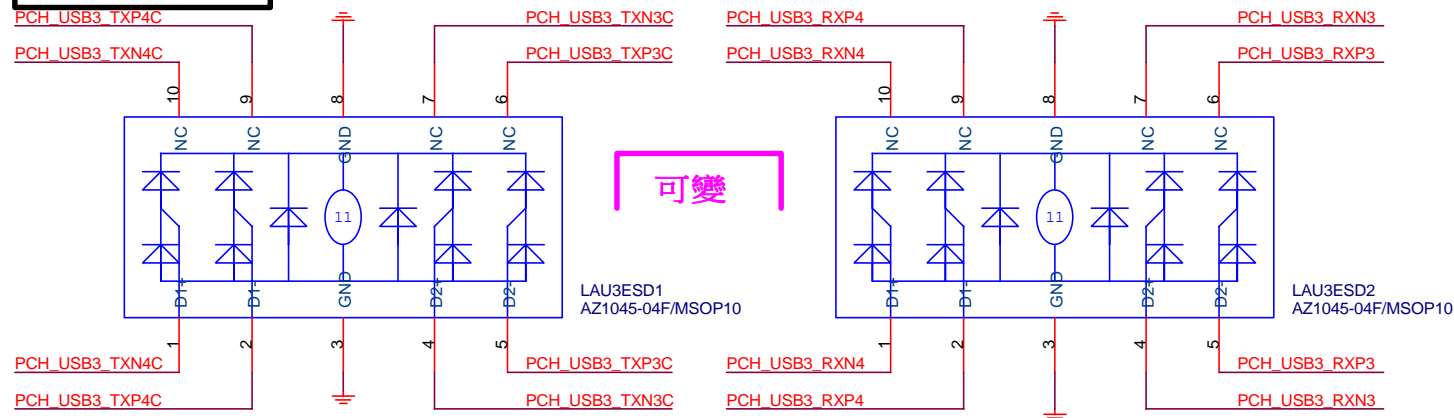


LA MDI-->100歐姆:[20/4/8/4/20]

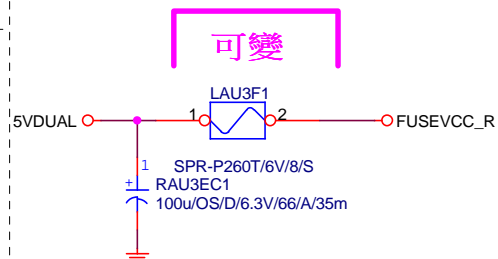
## Dual Color LED



note:可變更USB NAME



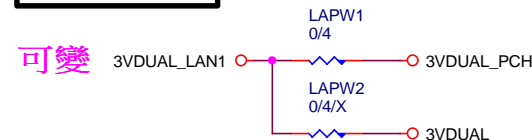
note:可變更FUSE



PS:視EMI需求



note: lan power連接及電流



## Gigabyte Technology

## LAN CONNECTOR-RTL8111G

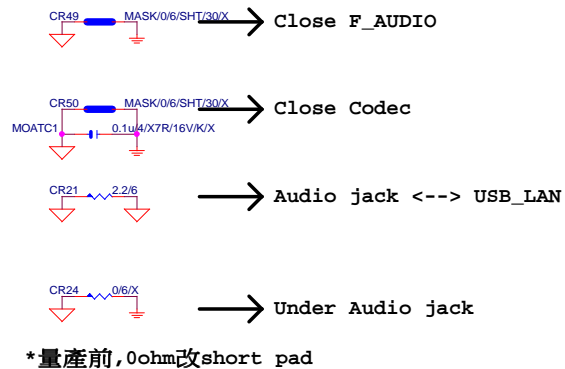
Size	Document Number
Custom	

**GA-H110M-DS2V DDR3<sup>0</sup> WP**

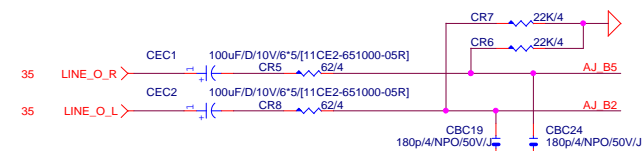
Date: Wednesday, November 18, 2015 Sheet 34 of 45



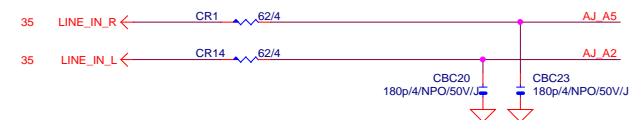
Rev 0.5



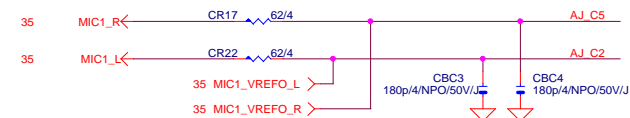
#### LINE-OUT



#### LINE-IN



#### MIC-IN

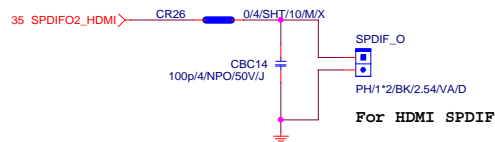


#### SURROUND

#### CEN/LFE

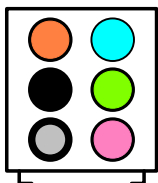
#### SURRBACK

#### SPDIF\_OUT

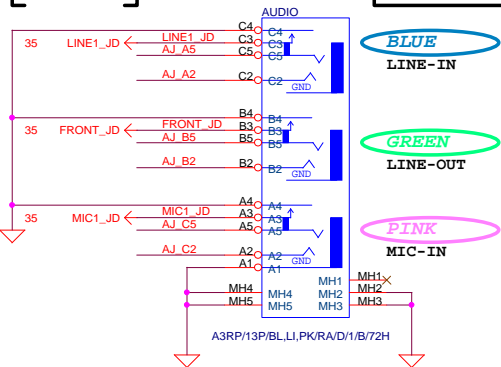


#### SPDIF\_IN

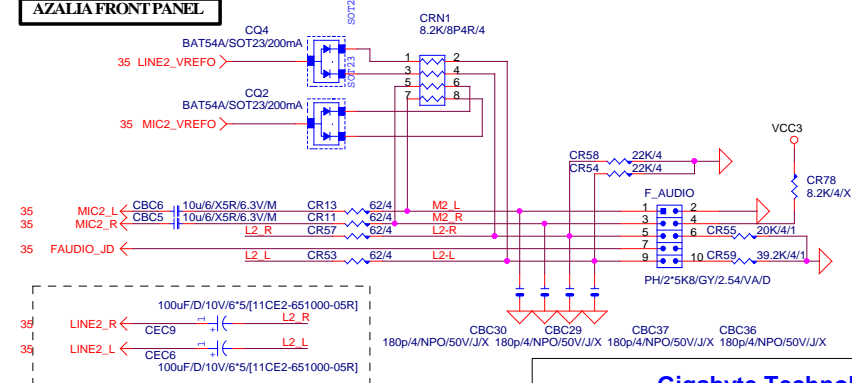
#### AZALIA JACK



#### AZALIA JACK



#### AZALIA FRONT PANEL



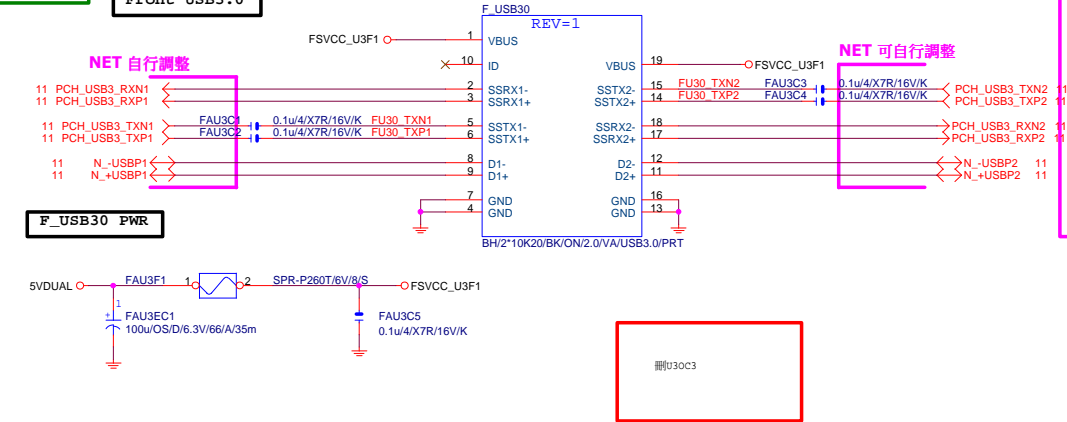
Gigabyte Technology

AUDIO JACK

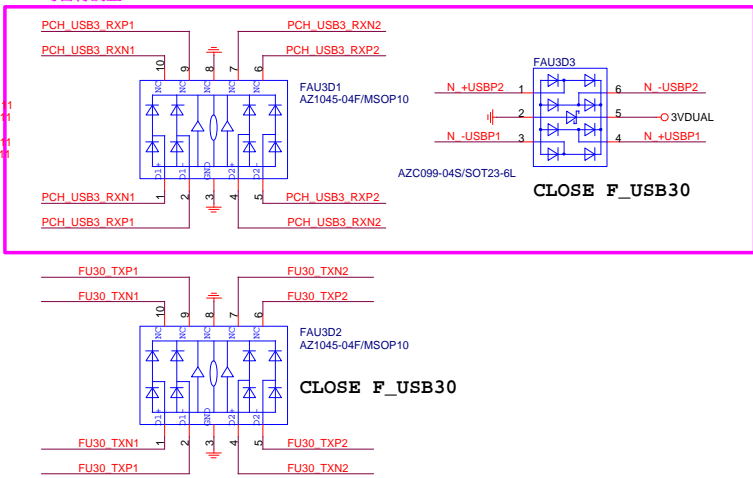
GA-H110M-DS2V DDR3 WP

Title	Document Number
Size	Custom
Date	Wednesday, November 18, 2015
Sheet	36 of 45

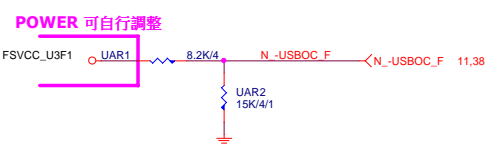
Front USB3.0



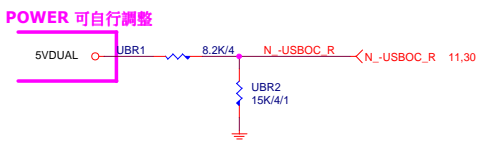
NET 可自行調整



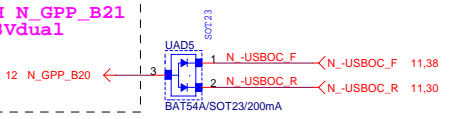
-USBOC\_F



-USBOC\_R



\* 接 PCH N\_GPP\_B21  
PCH PU 3vdual

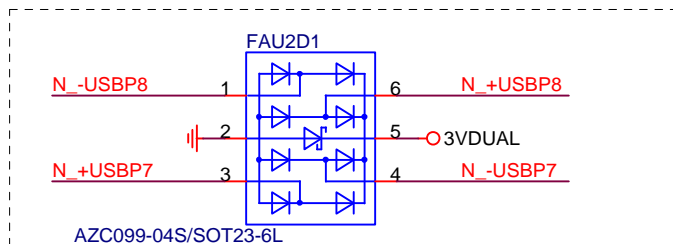
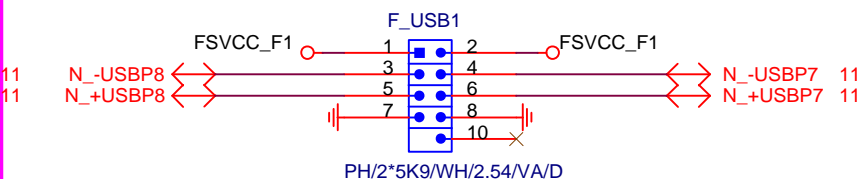


Rev: 0.7

## FRONT USB1

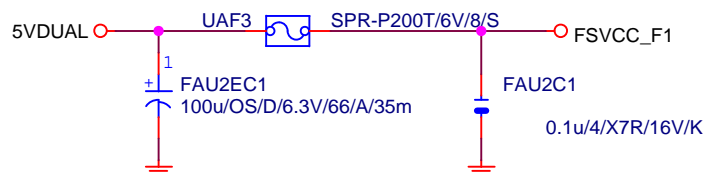
NET 可變

## FUSB2X5-HS



Close to connector

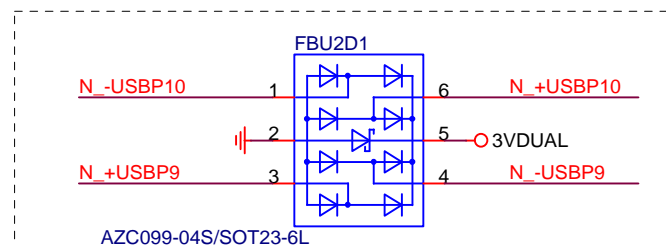
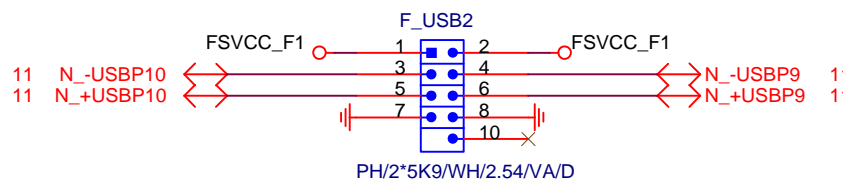
FUSE 2 Port 1 Fuse 2A



## FRONT USB2

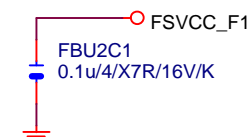
NET 可變

## FUSB2X5-HS

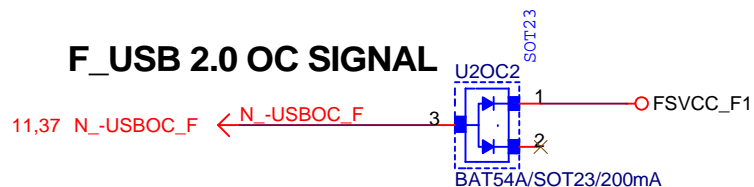


Close to connector

FUSE 2 Port 1 Fuse 2A



## F\_USB 2.0 OC SIGNAL



Gigabyte Technology

Title

USB2.0

Size  
A

Document Number

GA-H110M-DS2V DDR3 WP

Date:

Wednesday, November 18, 2015

Sheet

38

of

45

Rev.  
1.0

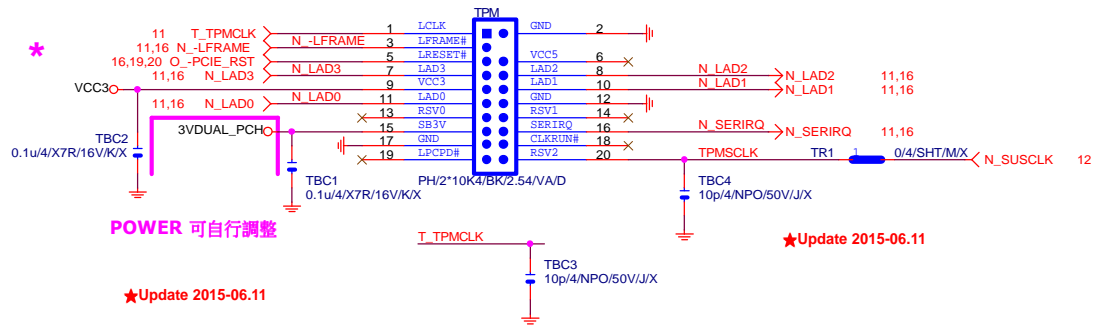
COM PORT

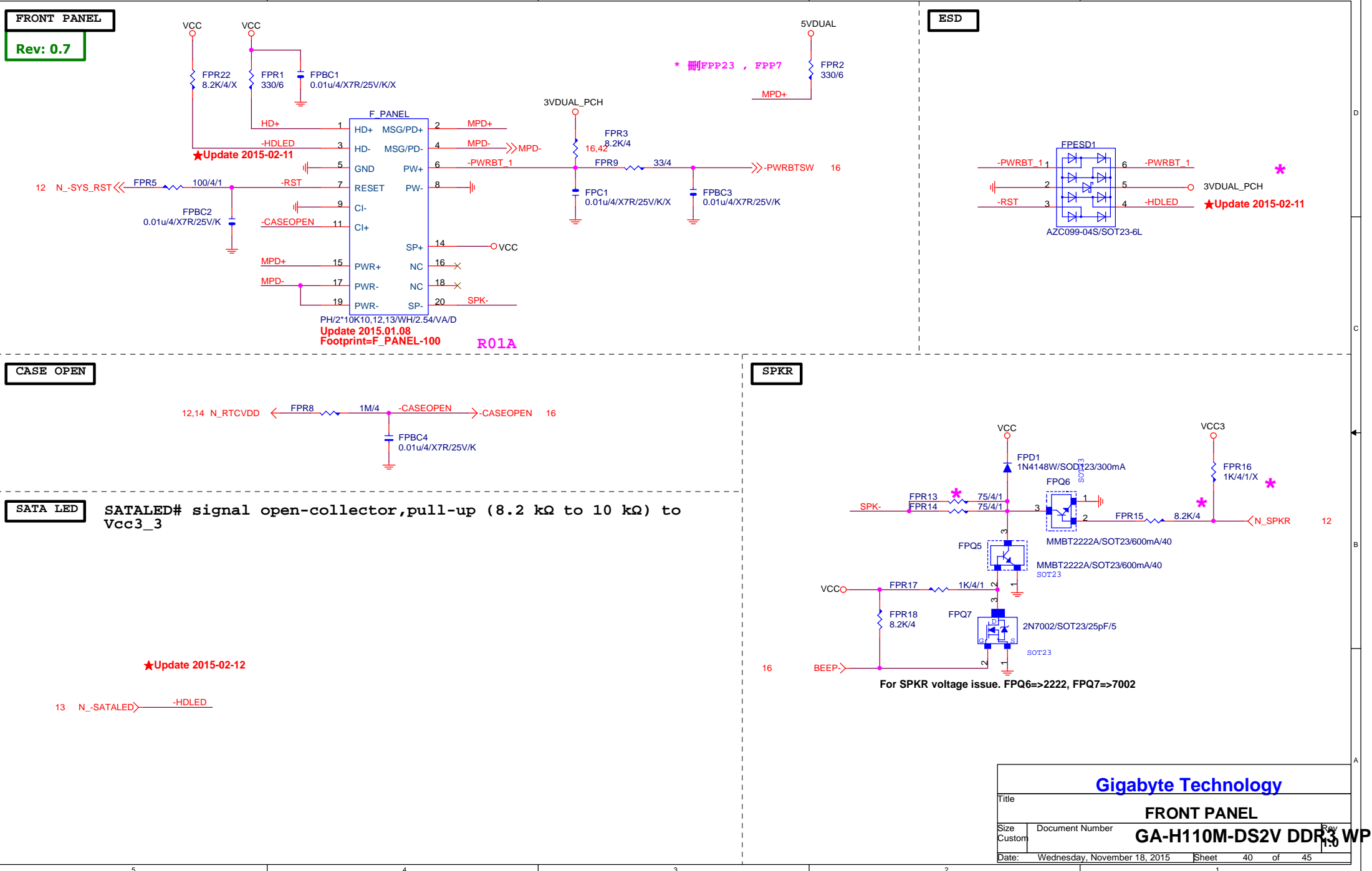
COM RI

LPT PORT

TPM CONNECT

Thunderbolt (N/A)

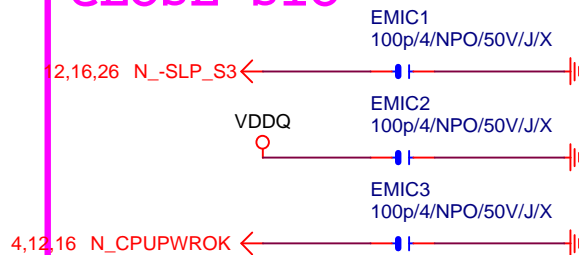




Gigabyte Technology	
FRONT PANEL	
Size	Document Number
Custom	GA-H110M-DS2V DDR3 WP
Date:	Wednesday, November 18, 2015
Sheet	40 of 45



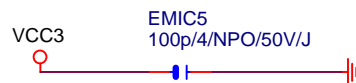
## CLOSE SIO



## CLOSE PCH



## close to PCH (NR17)



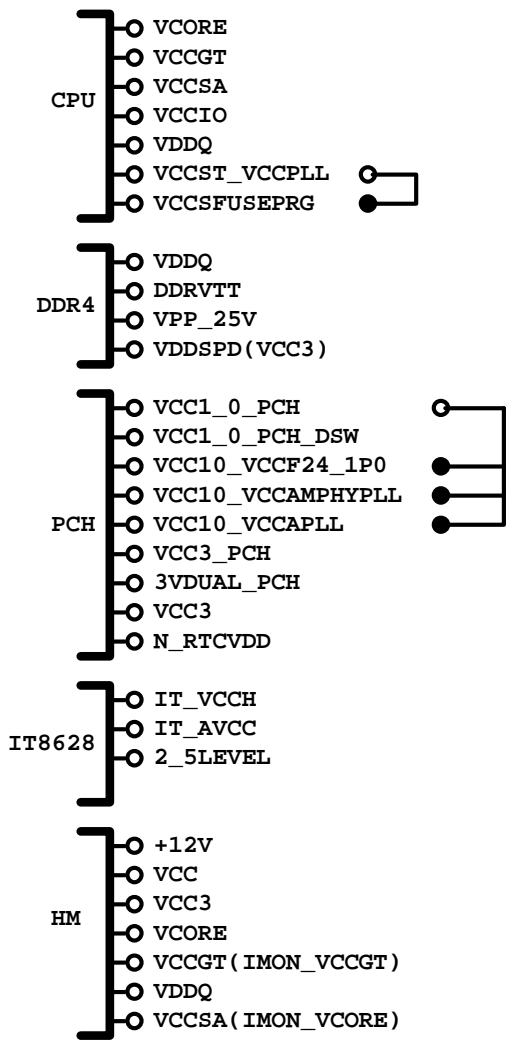
## close to SIO (PIN92)MPD-



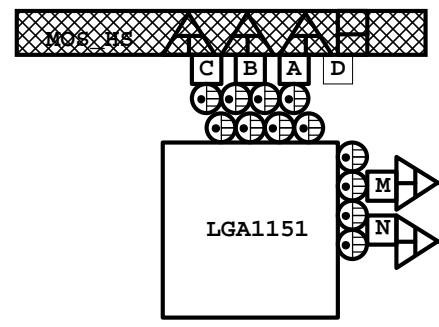
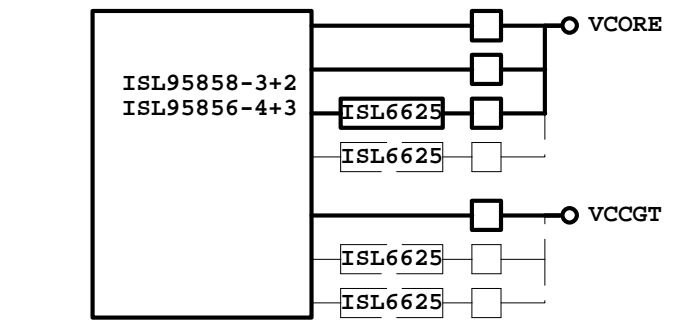
# GIGABYTE™

Title			
EMI/ESD			
Size	Document Number		Rev
A	GA-H110M-DS2V DDR3 WP		1.0
Date:	Wednesday, November 18, 2015	Sheet	42 of 45

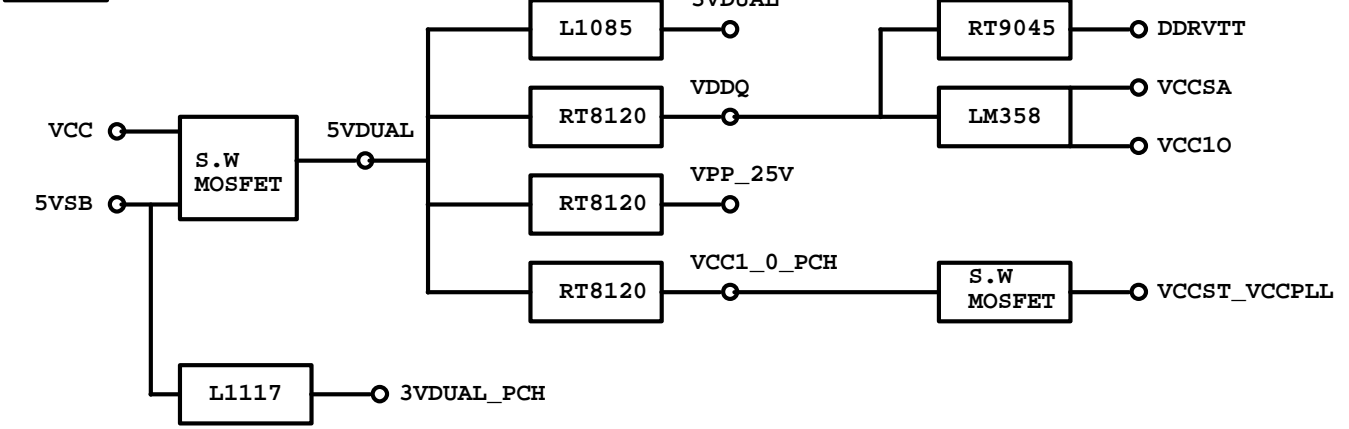
POWER BLOCK MAP



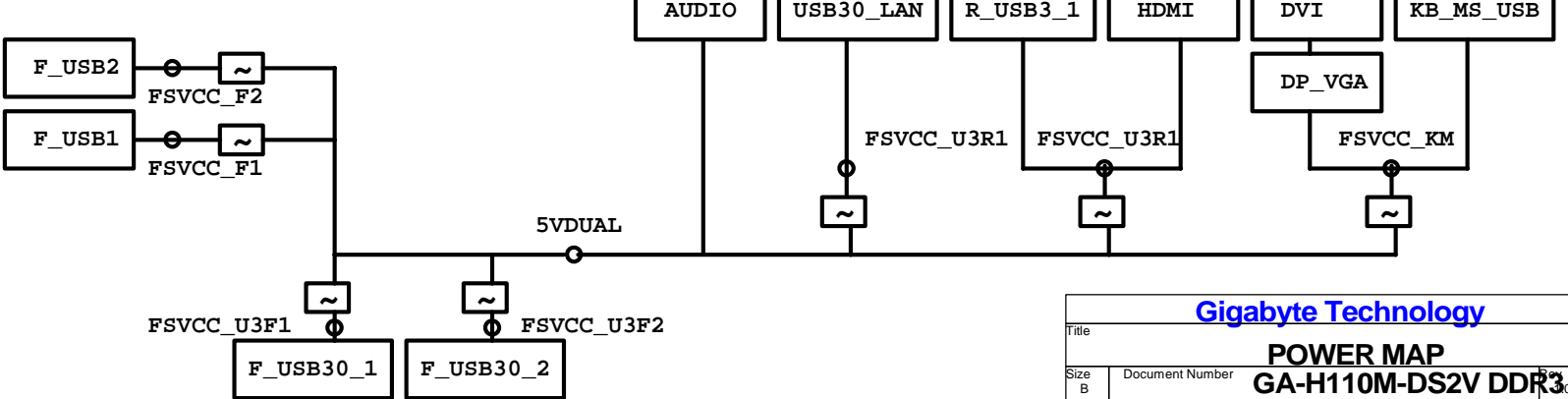
VCORE/VCCGT



POWER



FUSE POWER F/R



固態電容料號.請自行修改

日系黑色固態	Capture Value
11C02-C85600-01R	560u/FP/D/6.3V/68/C/8m
11C05-C82700-01R	270u/FP/D/16V/88/C/12m
11C05-C61000-01R	100u/OS/D/16V/66/C/30m
11C02-C51000-01R	100u/FP/D/6.3V/65/C/13m

日系一般固態	Capture Value
11C02-685600-01R	560u/FP/D/6.3V/68/8m
11C05-882700-01R	270u/FP/D/16V/88/12m
11C05-661000-03R	100u/OS/D/16V/66/30m
11C02-651000-02R	100u/OS/D/6.3V/66/30m

台系固態	Capture Value
11C02-661000-09R	100u/OS/D/6.3V/66/A/35m
11C05-691000-09R	100u/OS/D/16V/69/A/35m
11C05-8C2700-09R	270u/FP/D/16V/8C/A/10m
11C02-695600-09R	560u/FP/D/6.3V/69/A/11m

IRON CHOKE

	料號	Capture Value	SIZE	Footprint
DIP	11LC5-M4500C-01R	0.5uH/40A/IMD109/M/D	10*10	CHOKE05U-40A-1PQ-3
DIP	11LC5-M2500C-01R	0.5uH/20A/IMD0809/M/D	8*8	CHOKE1U-R50M-IF

Ferrite


	料號	Capture Value	SIZE	Footprint
DIP	11LC5-F3500C-11R	0.5uH/32A/INCG109/FSI/D	10*10	CHOKE05U-40A-1PQ-3
DIP	11LC5-F2500C-11R	0.5uH/25A/INC0809/F/D	8*8	CHOKE1U-R50M-IF
SMD	未建(SIUC1007-R30M-JJ1W)		10*7	CHOKE11X8MM-SMD

BEAD

	料號	Capture Value	SIZE	Footprint
DIP	10LFB-15470A-01R	47/4030/15A/S	4*3	BEADC8B-BPH_SMD

PWM料號

		料號	Capture Value	Footprint
PWM	ISL95856	10TA1-695856-01R		IC52QFN-6x6-G
PWM	ISL95858	10TA1-695858-01R		IC52QFN-6x6-G
PWM	IR35201	10TA1-635201-00R		IC56QFN-9VRS4339
PWM	IR3570	10TA1-603570-00R		IC40MLFP-ISL95835



Title

RT8120\_DDR4 POWER

Size Custom

Document Number

GA-H110M-DS2V DDR3 WP

Rev

1.0

Date:

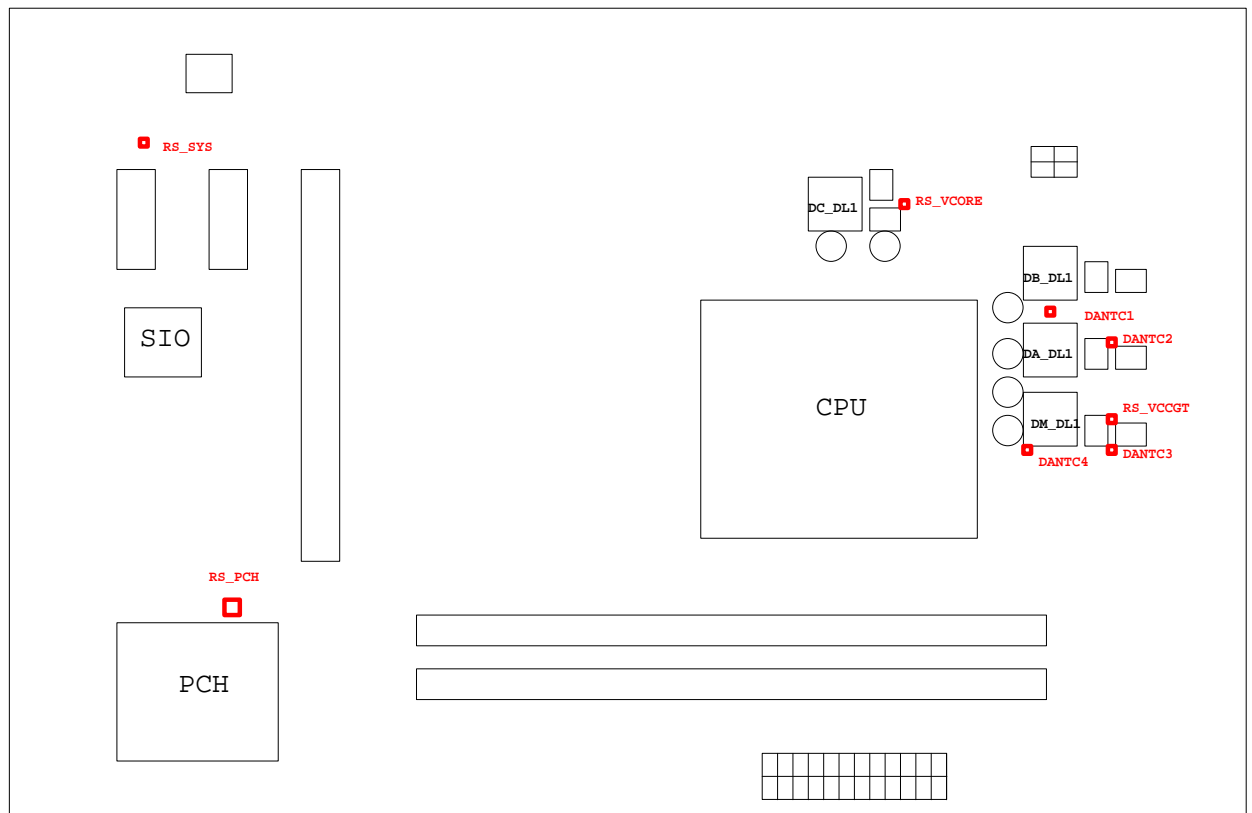
Wednesday, November 18, 2015

Sheet

44

of

45



熱敏電阻	擺放靠近位置	走線方式
DANTC4	DM_DL1	Differential
DANTC1	DA_DL1	Differential
DANTC3	DM_DQ1	Differential
DANTC2	DA_DQ1	Differential
RS_VCORE	DA_DQ1	N/A
RS_VCCGT	DM_DQ1	N/A
RS_PCH	PCH	N/A
RS_SYS	CU1	N/A